

\$ ' ' ' ) ž \$ ' ' ' ) 3

**8 C : & E 25C**

5 ` U X V Q \* % † ~ ! "

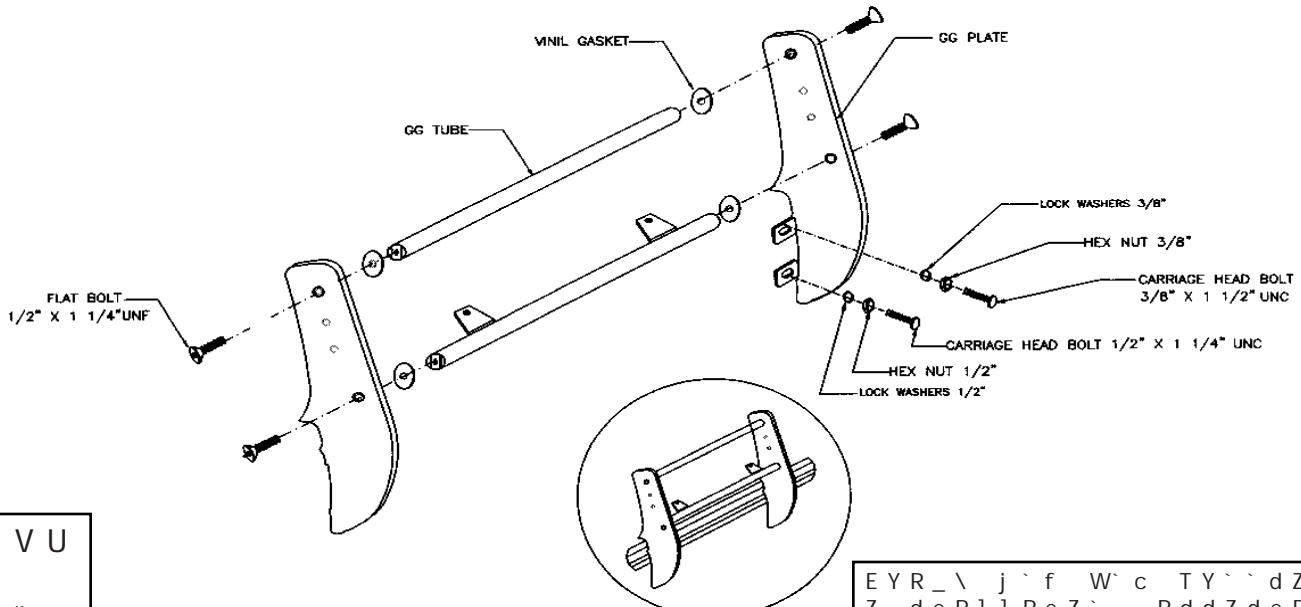
**A2CE B : D E +**



- set tubes (top & bottom)
- set side plates (left & right)
- set chrome/black plastic caps
- pc AST-T70 1/2" x 1 1/4" flat bolts
- pc ASH-E10 vinyl gaskets
- pc AST-T52 1/2" x 1 1/4" carriage bolts
- pc AST-T50 3/8" x 1 1/2" carriage bolts
- pc AST-RPR01 1/2" lockwashers
- pc AST-RPR03 3/8" lockwashers
- pc AST-TU04 1/2" hex nuts
- pc AST-TU06 3/8" hex nuts

**: ? D E C F 4 E : @ ? D +**

- 1.- Read instructions before beginning installation.
- 2.- Assemble Grill Guard using flat bolts. Tighten bolts.
- 3.- Center Grill Guard on the front bumper.
- 4.- Mark both upper and lower hole locations through mounting tabs onto bumper. Remove Grill Guard.
- 5.- Drill two 3/8" holes for the top tabs and two 9/16" holes for the bottom tabs.
- 6.- Reposition Grill Guard on bumper and attach with supplied hardware. Tighten all bolts.
- 7.- Install the chrome/black plastic caps in the flat heat bolts to cover these bolts.
- 8.- Use the chrome /black plastic famele caps and the chrome/black plastic male caps to cover the holes of the plates.
- 9.- Recheck nuts and bolts periodically.
- 10.- Keep your Grill Guard clean and waxed to prevent corrosion. Use non abrasive automotive type wax.



CVgZdVU  
ARXV "

EYR\_ \ j ` f W` c TY` ` dZ\_X 8`  
Z\_deR]] ReZ` \_ RddZdeR\_TVt a  
i)!!! / & # ( † % % & ` c i \* ( # /