

INSTALLATION INSTRUCTIONS

8780/8780B

99 – 04 Jeep Grand Cherokee 4 Dr

Parts List :

QTY	(1) Hardware kit including :	
(1) Sidebar set (Driver & Passenger)	(2) 1/2 x 2" Hex head bolts	(8) 7/16" Flat washers
(2) Front mounting brackets	(2) 1/2" Flat washers	(10) 7/16" Lock washers
(2) Rear mounting brackets	(2) 1/2" Lock washers	(4) 7/16" hex nuts
(2) Auxiliary brackets	(4) 3/8 x 1 1/4" Hex head bolts	
	(4) 3/8" Flat washers	
	(4) 3/8" Lock washers	
	(6) 7/16 x 1 1/2" Hex head bolt	
	(4) 7/16 x 1 1/2" cut carriage head bolt	

Tools Required :

3/4" Socket	5/8" Wrench	
9/16" Socket	5/8" Socket	Ratchet

Instructions :

Approximated installation time: 25 min.

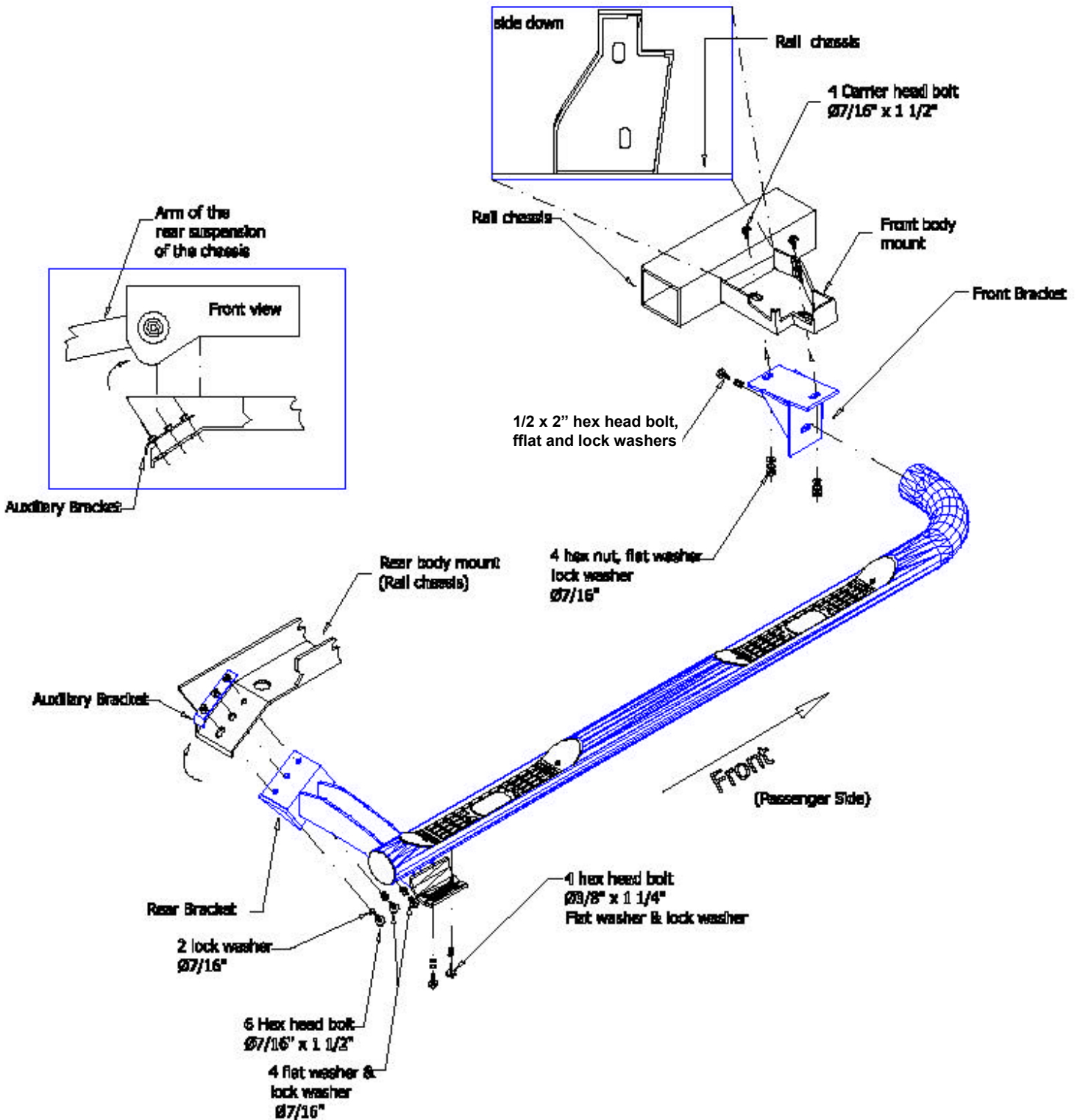
1. Read and understand instructions completely before beginning installation.
2. Sidebar set consist of a driver and passenger side. The bent leg is the front leg. Be sure to determine the correct side before installation. See Illustration as reference.
3. To install front mounting bracket, locate the existing holes at front of frame of vehicle. Then introduce 7/16 x 1 1/2" cut carriage head bolts into the existing holes, turn 1/4 clockwise the bolt. Place front mounting bracket and secure to the installed bolts using 7/16" flat & lock washers and hex nuts. Leave loose.
4. To install rear mounting bracket, locate rear body mount at the union of the rear arm suspension and frame. Introduce the auxiliary bracket and align bracket holes with the existing holes on the bottom side of frame. Secure rear mounting bracket to the auxiliary bracket using 7/16" flat & lock washers and hex nuts. Finger tighten at this time.
5. Place the sidebar up to the front and rear mounting brackets. Bolt to the front mounting bracket using a 1/2 x 2" hex head bolt, flat and lock washers. Bolt to the rear mounting bracket using the 3/8 x 1 1/4" hex head bolts, flat and lock washers. Leave loose.
6. Make any final adjustments to the alignment of the sidebar and tighten all bolts. Repeat for the opposite side.
7. You may need to periodically re-tighten the bolts.

INSTALLATION INSTRUCTIONS

8780/8780B

99 – 04 Jeep Grand Cherokee 4 Dr

Assembly Diagram :



Cleaning and care instructions :

Protect the finish with a non-abrasive automotive wax, (e.g. Pure Carnauba) on a regular basis. The use of any soap, polish, or wax that contains an abrasive is detrimental to the finish, as the compounds scratch the finish and cause corrosion.