

# Getting



## Pushed Around

THE GO INDUSTRIES BIG TEX GRILLE IS A SIMPLE BOLT-ON GUARD THAT OFFERS EXTRA PROTECTION AND IMPROVED LOOKS.



The stock bumper and grille was prone to damage when encountering a variety of elements such as stuck vehicles that needed a nudge or other trail obstacles such as fallen trees.



**2** The damage seen here was received from a Jeep that was stuck on a Jeep trail in the rugged San Bernardino National Forest. The Super Duty easily shoved the Jeep to the side of the trail but suffered some damage in performing its good deed for the day.



**3** Further proving this install was easy, the hardware for the Big Tex Grille Guard consists of only a handful of pieces, which includes two auxiliary light tabs we opted not to install at this time.



**4** Should we decide to do so in the future, we would need to drill two small holes for the #8 3/4 inch self-tapping screws provided with the grille guard. We recommend using silicone on the screws to reseal the grille.



**5** The two black bolts on each side of the bumper must be loosened just enough to slide the grille guard brackets into position beneath the bolts.

**W**hen push comes to shove, bigger is better. In many off-road situations, many vehicles often need a push to get out of a sticky situation. In this case, a truck with a good push bar will do the trick. But if you are looking for a real grille guard that doesn't wobble or is merely added on for looks, then you may want to check out the Go Industries Big Tex grille guard. Not only is the Big Tex grille guard larger than most other grille guards, it uses sturdy factory mounting points so that it is actually functional.

The Big Tex guard is manufactured from 14-gauge steel and features a one-piece tubular frame that measures 1.9-inch in diameter. The guard is available in a chromed or black powder coat finish and it features light tabs to mount multiple off-road lights. With external welds and a sturdy design, the Big Tex is definitely heavy-duty and Go Industries claims that the Big Tex is simple to install.

We looked into what it would take to install a Big Tex grille onto a Ford F-150 Super Duty and found that the installation was as simple as they claimed. The brackets included in the kit were easy to install near the factory tow hooks of the truck. Once these were in place, the upright bars were bolted onto the brackets. It's a tight fit but it goes together without any problems. Once the upright bars are in place, the one-piece cross bar is installed and bolted in behind the uprights.

After we bolted together the guard, we noticed that it was solid and that there was still plenty of room between it and the front grille of the truck. The mounting points even allowed us to still use the truck's factory tow hooks. In addition, the chromed finish looked great on this vehicle, giving it an improved look. **TEN**

— By: Fidel Gonzales/ Dan Sanchez  
Photos: Fidel Gonzales



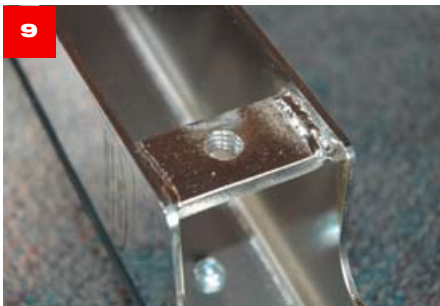
**6** This is easy, since the nuts holding these bolts in place are fixed and do not require a wrench on the other end. Only loosen one side of the bumper at a time.



Despite the close proximity of the stout factory tow hooks, the grille guard brackets slide easily into place and retain full functionality of the factory tow hooks.



The grille guard uprights are laser cut from 11 gauge steel and finished with nickel-chrome plating that is backed with a six-year warranty.



Because the grille guard bracket holes are threaded, attaching the uprights is easy. At this point, do not tighten the bolts. We'll save that for a later step to allow for adjusting the grille guard's fit.



After adjusting the Big Tex Grille Guard to its proper position, tightening the bolts is made easy by the ample space between the grille guard and the grille.

11



Both guard uprights are installed on each side of the truck.

12



The cross bars are then bolted into position on the upright brackets. The cross bars come pre-assembled and simply bolt in at the rear.

14



The heavy duty push pads are firmly attached and thick enough to absorb relentless abuse throughout the course of its lifetime.

13



The Go Industries Big Tex grille features a two-inch diameter bar made from 14 gauge steel.

### SOURCE

**Go Industries**

420 North Grove Road,

Richardson, TX 75801

800-527-4345

15



The Big Tex bar not only looks good, but it protects the front of this Ford Super Duty and provides a solid platform to lend aid to any stuck vehicle.