

Bumper Replacement

Installation Instructions

58106

Toyota Tundra

'14-'17

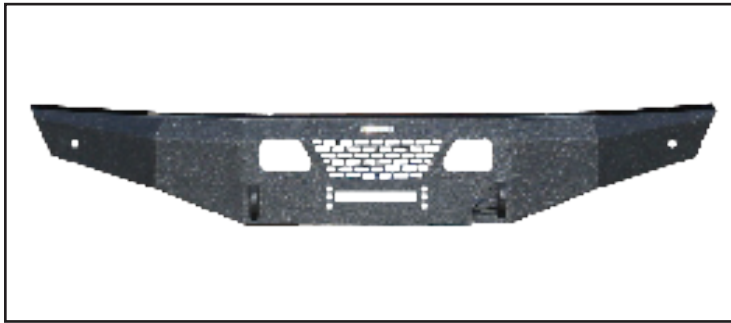


Diagram 1

Parts List:

| | |
|-----------------------------------|-------------------------------------|
| 1 - Bumper Replacment | 8 - 1/2" x 1 1/2" Bolts |
| 1 - Driver Side Bracket # 58106-5 | 16 - 1/2" Flat Washers |
| 1 - Pass. Side Bracket #58106-6 | 8 - 1/2" Nylon Lock Nuts |
| 4 - M12 x 40 mm Bolts | 2 - Round Plastic Plugs |
| 4 - M12 Flat Washers | |
| 4 - M12 Lock Washers | *May include extra hardware. |

Note: Completely read instructions before beginning installation!

1. Remove the contents from the box and check for missing pieces or damage. If parts are missing or damaged, contact the original place of purchase.
2. Disconnect any factory fog lights and/or parking sensors that mount on the factory lower metal bumper.
3. Remove the factory lower metal half of the bumper from the truck. The upper plastic valance panel of the bumper does not need to be removed, as the diagrams show. Keep the factory nuts, as they will be reused.
4. If the truck is equipped with tow hooks, remove them at this time, they will not be reused.
5. If the truck is equipped with park sensors, remove them from the bumper, as they can be reused.
6. Position bracket #58106-5 onto the end of the driver side frame as shown in **Diagrams 3, 4, & 5**. Place the (4) nuts removed in step #3 back onto the studs and lightly tighten. Repeat this step for bracket #58106-6.
7. Place (1) M12 lock washer and (1) M12 flat washer onto each of the (4) M12 bolts. Insert the bolts with washer through the bottom of the brackets, treading into the holes in the frame. These holes are shown in **Diagram 4**.
8. If installing a winch, it needs to be installed at this time. Follow the winch manufactures instructions for attaching the winch, fairlead, and associated parts.
9. Place (1) 1/2" flat washer onto each of the (8) 1/2" x 1 1/2" bolts. Use two people to lift the bumper up to the mounting brackets. Align the four holes on each mounting bracket with the four holes on each side of the bumper. Place (1) bolt with washer through each of the eight mounting holes connecting the bumper to the brackets. Place (1) 1/2" flat washer and (1) 1/2" nylon lock nut onto each bolt.
10. Position and align the bumper on the truck while tightening all hardware at this time.
10. If the truck has front park sensors they can be inserted into the bumper and the wiring reconnected. The wiring needs to be secured and double checked. If the truck does not have the sensors there are some plugs that can be inserted into the holes to cover them. If the vehicle does not have front park sensors then insert the (2) round plastic plugs into the holes on the lower outer face of the bumper.
11. If the truck had fog lights, it is advised to weather seal the connector and secure the wiring, to prevent any future problems.
12. If using a winch, follow the winch manufactures instructions on wiring the winch.

Bumper Replacement

Installation Instructions

58106

Toyota Tundra
 '14-'17

Brackets #58106-5 & #58106-6

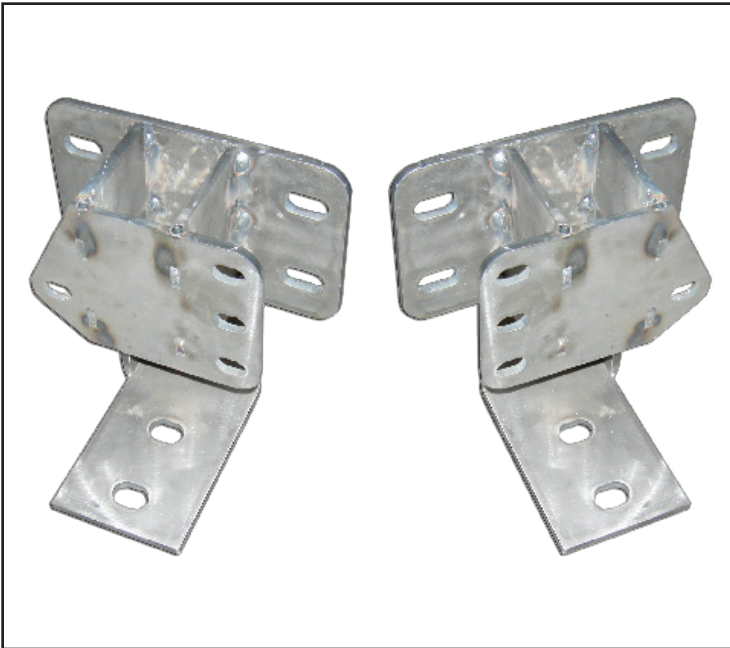


Diagram 2

Side View of Driver Side Bracket #58106-5 Installed

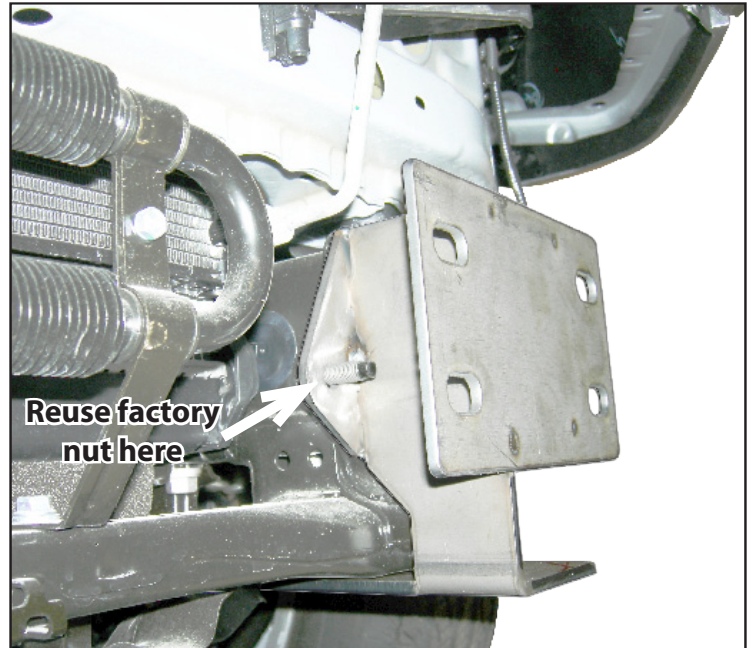


Diagram 3

5 Installed



Diagram 4

Side View of Driver Side Bracket #58106-5 Installed

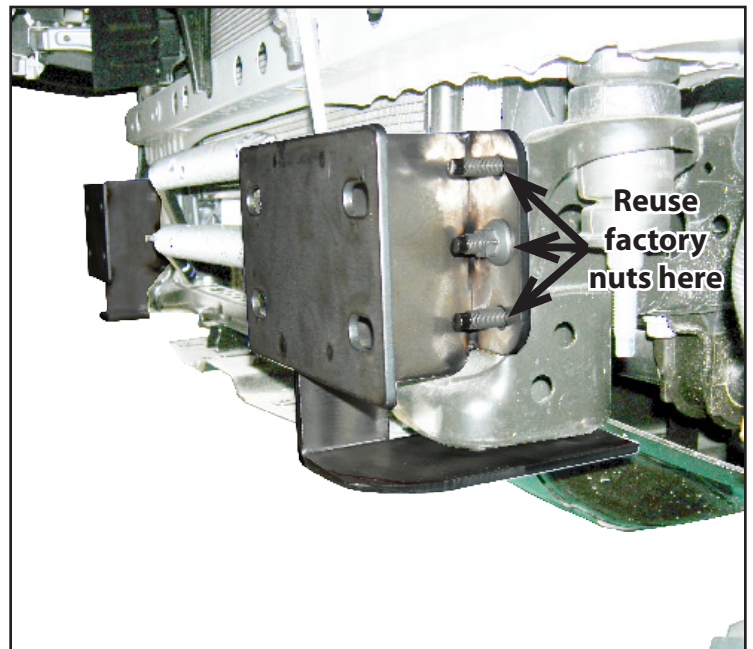


Diagram 5