

Baja Bumper Replacement

Installation Instructions

58145

Ford Super Duty '11-'16



****Does not include "D" rings as shown in picture****

Parts List:

1 - Baja Bumper Replacement	14 - 1/2" Split Lock Washers
1 - Driver Side Bracket #58145-5	14 - 1/2" Hex nuts
1 - Pass. Side Bracket #58615-6	
14 - 1/2" x 1 1/2" Bolts	
28 - 1/2" Flat Washers	*Extra Hardware may be included

Diagram 1

Note: Completely read instructions before beginning installation!

1. Remove the contents from the box and check for missing pieces or damage. If parts are missing or damaged, contact the original place of purchase.
2. Using **Diagram 2**, remove the bolts from the outside bumper support. Do this on both driver and passenger side, these bolts will not be reused. If truck is equipped with lights in bumper, unclasp the electrical line going to lights in the bumper. Using **Diagram 3**, remove the two main bumper bolts per side. Set bolts and nut plate aside they will not be reused. Repeat this procedure for the passenger side. Remove the 3 clips that hold the rubber air director flap to the bumper and to the truck, they will not be reused. After all of these steps remove the bumper and set aside.
3. Remove the tow hooks and factory bolts, set aside the bolts and tow hooks will not be reused. Using **Diagram 4**, place driver main bracket #58145-5 onto the top of the frame using (3) 1/2" x 1 1/2" bolts, (6) 1/2" flat washers, (3) 1/2" split lock washers (3) 1/2" hex nuts and reuse one factory bolt plate and hex nuts to attach the driver main brackets #58645-5 to the frame. Repeat the preceding procedure to install the passenger main bracket #58145-6.
4. If a winch is to be used install it at this time as per the manufactures installation instructions.
5. Place the bumper replacement up the brackets installed in step #3. Place (1) 1/2" flat washer onto the remaing 1/2" x 1 1/2" bolts. Insert the (8) bolts with washers through the bumper replacement and brackets. Place (1) 1/2" flat washer, (1) 1/2" split lock washer and (1) hex nut onto each of the 1 1/2" bolts.
6. The bumper and brackets are slotted for side to side and up and down adjustment of the bumper. Center the bumper onto vehicle and tighten all bolts and nuts. With all the adjustment the bumper has in it, it can sometimes make it tricky to get the bumper aligned and centered. It may require bolts to be loosened and tightened to get it aligned.

Baja Bumper Replacement

Installation Instructions

58145

Ford Super Duty '11-'16

View Behind Bumper Driver Side

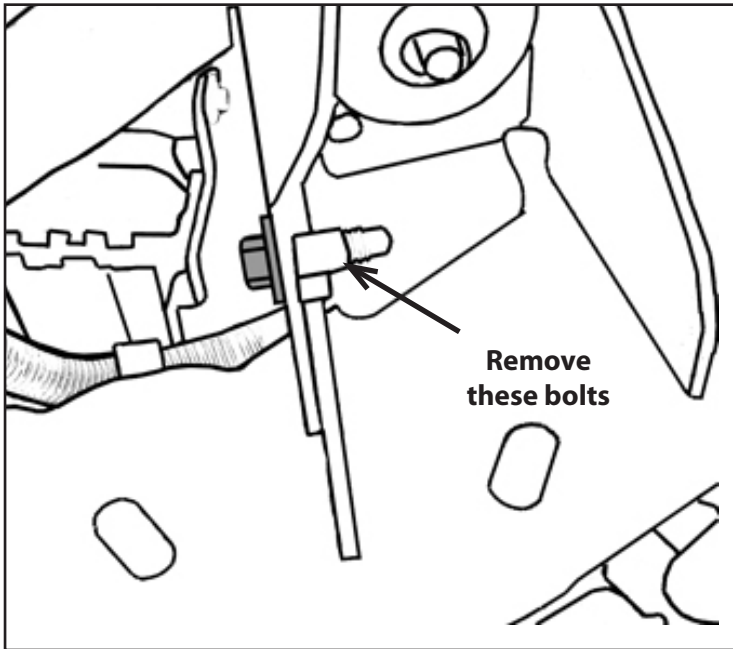


Diagram 2

View of Driver Side Bumper

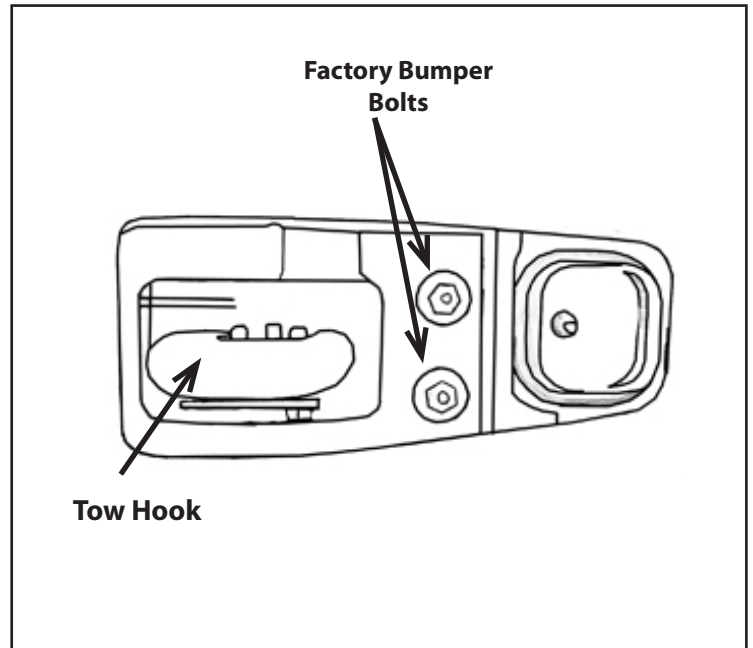


Diagram 3

Bracket #58145-5 Installed

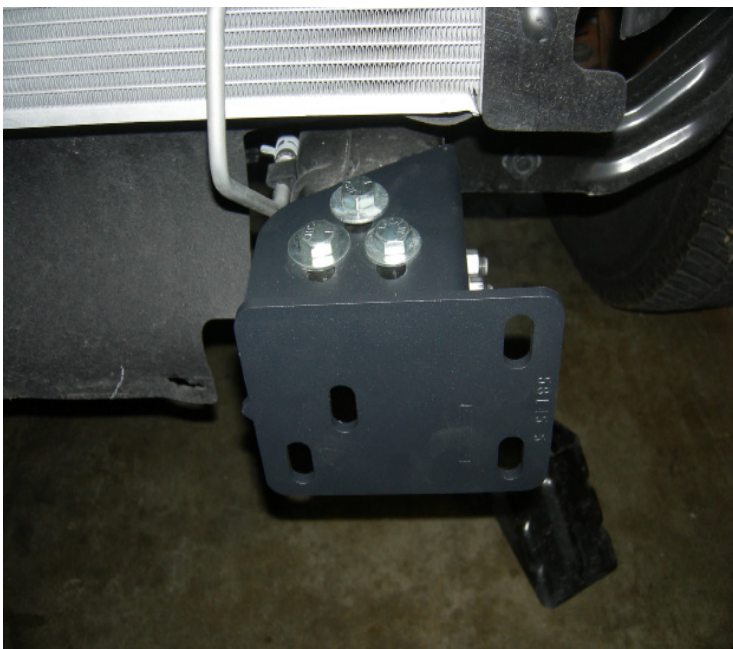


Diagram 4

Bracket #5845-6 Installed

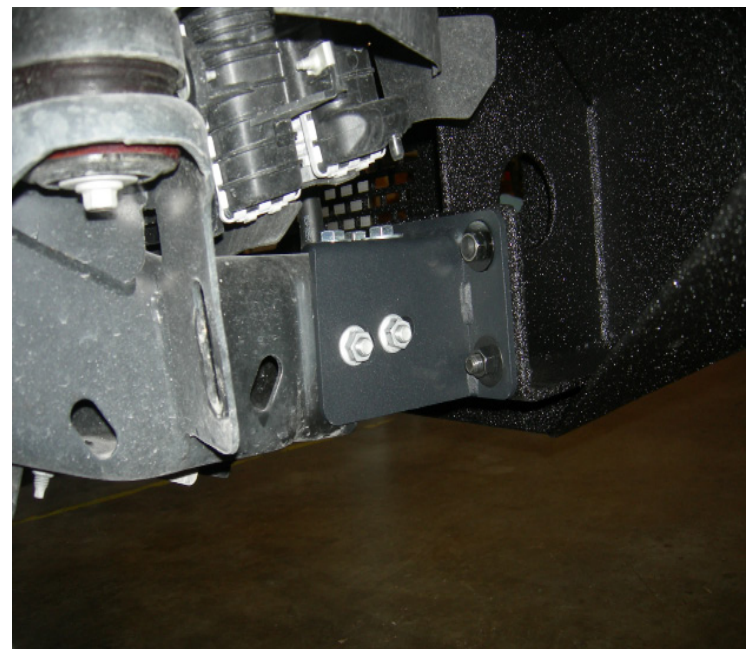


Diagram 5