

Big Tex Grille Guard

Installation Instructions

77672 & 77672B

Dodge Ram 1500

'13 - '14

Except Sport

Grille Guard Will Interfere with Front Parking Sensors.

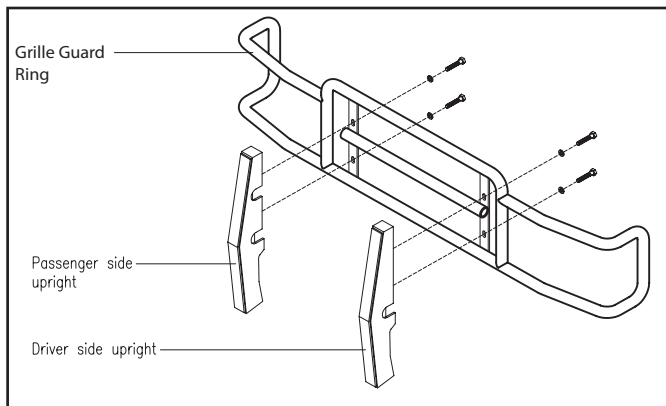


Diagram 1

Parts List:

1 - Grille Guard Ring	2 - 7/16" Flat Washers
1 - Driver Side Upright	2 - 7/16" Split Lock Washers
1 - Passenger Side Upright	4 - 7/16" Nuts
2 - Upper Brackets #77671-5	2 - M10-1.5 x 40mm Bolts
2 - Lower Brackets #77668-7	2 - M10 Flat Washers
8 - 1/2" x 1 1/2" Bolts	2 - M10 Lock Washers
8 - 1/2" Flat Washers	
4 - 1/2" Lock Washers	* May include extra hardware
2 - 7/16" x 2" Carriage Bolts	

Note: Completely read instructions before beginning installation!

1. Remove the contents from the box and check for missing pieces or damage. If parts are missing or damaged, contact the original place of purchase. Two people are strongly recommended for this install.
2. The black panels in the tow hook pocket areas, shown in **Diagram 2**, need to be removed. If the truck does not have tow hooks they will be solid filler panels, if the vehicle has tow hooks they will be the black plastic surround of the tow hook area. Loosen the four attaching bolts on each panel from the backside of the bumper. Once the bolts are removed the panels can be slide towards the center of the truck and removed. These panels will not be reused.
3. Remove the plastic cover that connects the top of the grille to the core support, by removing the clips on the top of it. Set aside as it will be reinstalled later.
4. Remove the grille from the truck by removing the top bolts holding the grille to the core support. The bottom has tabs that will need to be depressed to release the grille from the plastic bumper top panel. Set the grille to the side it will be reinstalled later.
5. Locate the inner fender access panels as shown in **Diagram 3**. Removed the clip to have access to the inside of the inner fender. Locate and remove the single bolt that connects the fender lip to the end of the top bumper corner, shown in **Diagram 4**. There will be one on both driver and passenger side.
6. The plastic bumper top panel now needs to be removed. It is attached with the bolts removed in step #5 and some tabs that are clipped in under the headlights. On most vehicle you can start on one side by pulling the panel outward by the fender lip and work around to the opposite side of the truck. On some bumpers a long flat tool may need to be inserted under the headlights to pop the tabs.
7. There is a black plastic support under the top bumper panel removed in the above step. This support needs to be removed by unbolting the 2 bolts on each side holding it to the core support.
8. Locate and remove the bolts and nuts shown in **Diagrams 6, 7 and 8**. Place driver side lower bracket #77668-7 up to the holes where the bolts were just removed. Placing the brackets in between the back side of the bumper and the tow hook mount, if equipped. The brackets will go on the bolt hole that is further towards the outside of the truck. Insert (1) 7/16" x 2" carriage bolt through the bumper, bracket and tow hook mount hole and place (1) 7/16" flat washer, (1) 7/16" lock washer and (1) 7/16" nut on the bolts. Leave loose at this time. Repeat for passenger side lower bracket of the same part



420 N. Grove, Richardson, TX 75081
Tele: (800) 527 - 4345 Fax: (800) 442 - 5263
Web site: www.goindustries.com
E-mail: gosupport@goindustries.com

Big Tex Grille Guard

Installation Instructions

77672 & 77672B

Dodge Ram 1500

'13 - '14

Except Sport

9. Locate and remove the (1) outermost bolt holding the black brace on top of the steel bumper on both driver and passenger side. Place (1) M10 flat washer and (1) M10 lock washer on to each of the M10 x 40mm bolts. Place (1) upper bracket #77671-5 onto the top of the driver and passenger side brace insert the M10 bolts with washers through the brackets and brace into the bumper, refer to **Diagrams 9 and 10**. Leave all hardware loose at this time.
10. Center the brackets on the vehicle and adjust them to have a 37.5" measured from outside to outside of the pad where the grille guard bolts onto.
11. Place (1) 1/2" flat washer and (1) 1/2" lock washer onto (4) 1/2" x 1 1/2" bolts. Position the driver side upright bottom tab onto the top of the driver side lower bracket #77668-7 and the top tab underneath the upper bracket #77671-5, using **Diagram 9** for reference. Thread (2) bolts with washers through the brackets and threads into the tabs in the upright. Repeat this for the passenger side upright.
12. Using two people with caution as to not damage the truck, lower the grille guard ring into position onto the back side of the uprights. Place (1) flat washer on to (4) 1/2" x 1 1/2" bolts. Thread the bolts through the holes in the vertical straps of the ring and into the vertical upright tabs.
13. Position and center the grill guard on the truck and tighten all hardware at this time.
14. Reinstall the black plastic support on top of the bumper.
15. Reinstall the plastic top bumper panel at this time, using caution to not damage it or the truck. It will need to be gently maneuvered into place with the grille guard installed.
16. Reinstall the vehicles grille and core support cover.

Tow hook Pocket Panels Removed



Diagram 2

Driver Side Inner Fender Access Panel



Diagram 3

Big Tex Grille Guard

Installation Instructions

77672 & 77672B

Dodge Ram 1500

'13 - '14

Except Sport

**Driver Side Plastic Bumper Top Panel,
Unbolted and Unclipped**



Diagram 4

Driver Side Black Plastic Support Panel Screws

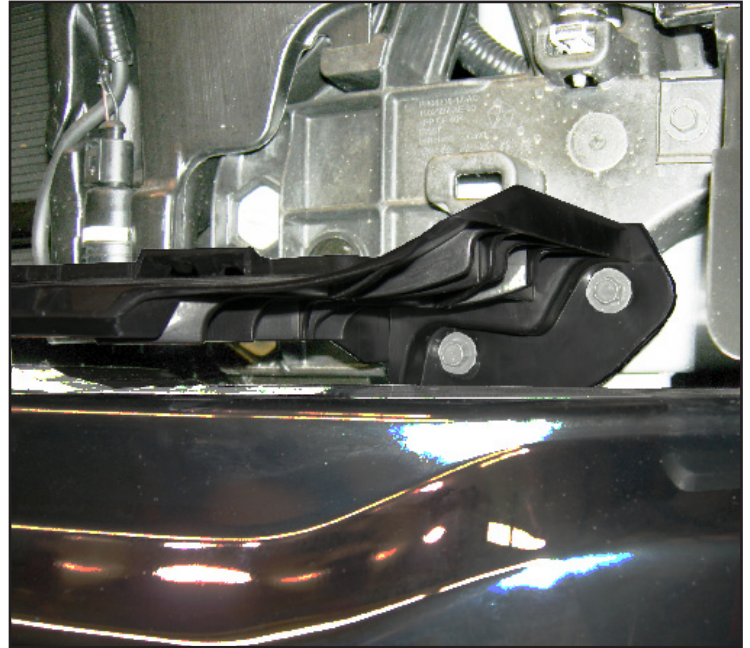


Diagram 5

Passenger Side Tow Hook and Bumper Bolts

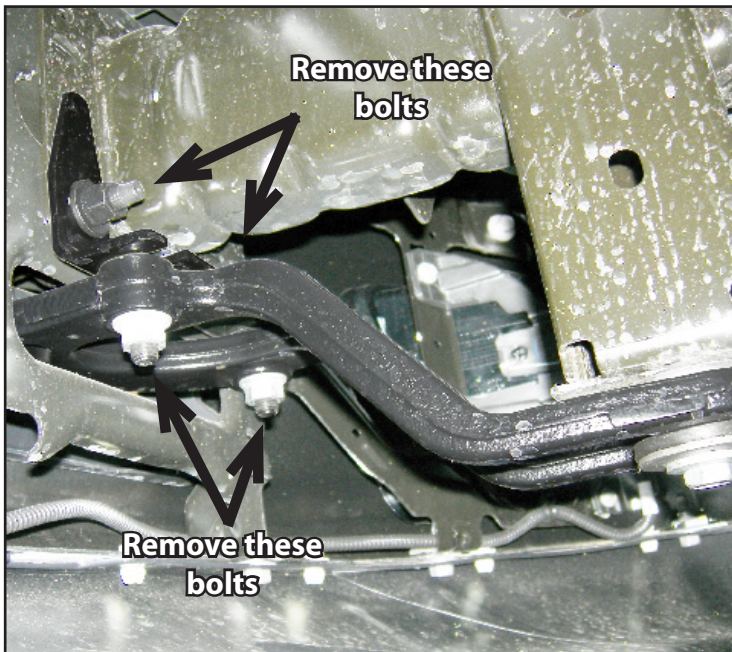


Diagram 6

Driver Rear View of Bracket #77668-7 Installed



Diagram 7

Big Tex Grille Guard

Installation Instructions

77672 & 77672B

Dodge Ram 1500

'13 - '14

Except Sport

**Front View of Driver Side Bracket #77668-7
Installed on Bumper**



Diagram 8

Bracket #77671-5

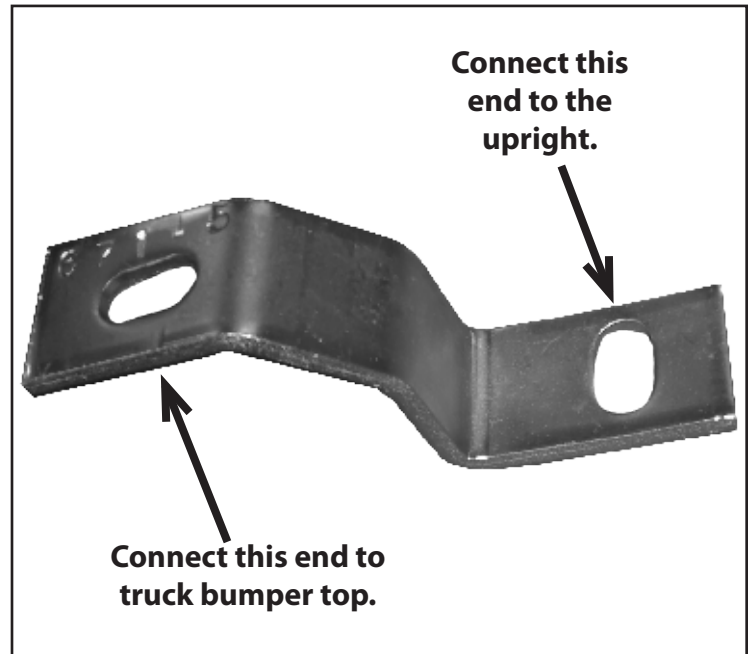


Diagram 9

**Front View of Passenger Side Bracket #77671-5
Installed with Upright**

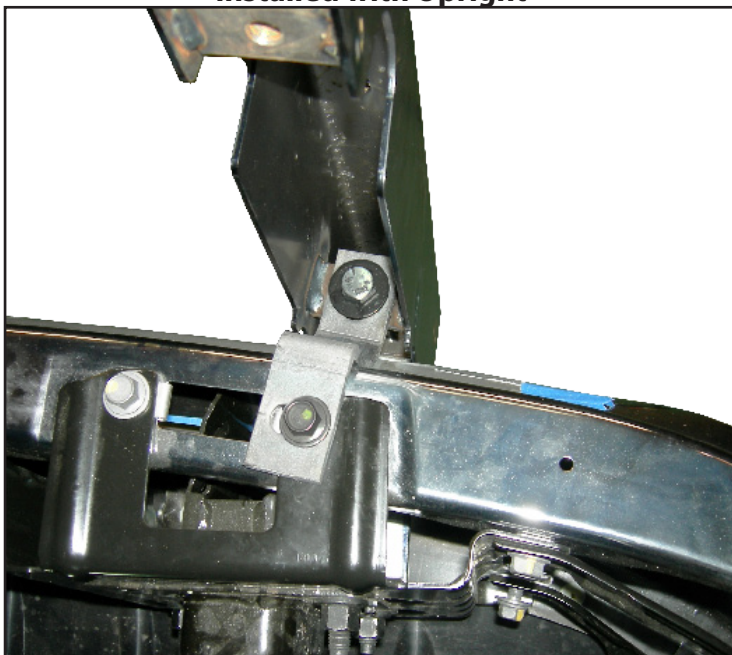


Diagram 10