



1235 W. Trinity Mills Rd.  
Carrollton, Texas 75006  
Tele: (800) 527-2006  
www.earlowen.com  
www.cattlemanhd.com

# Diamond Tread Steps

Installation Instructions

## 810350

Dodge Ram 2500-5500

Regular Cab

'10 -'14

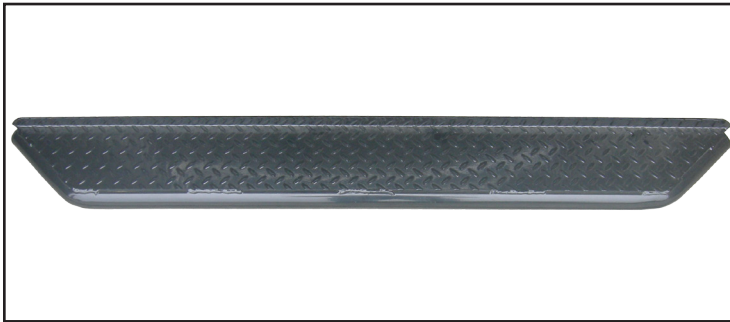


Diagram 1

### Parts List:

1- Driver Side Step	12 - 3/8" Flat Washers
1 - Passenger Side Step	8 - 3/8" Lock Washers
4 - Brackets #42764-5	4 - 3/8" Nylon Lock Nuts
4 - V-bolt Plates #42322-25	
8 - 1/2" x 1 1/2" Bolts	
16 - 1/2" Flat Washers	*May include extra hardware.
8 - 1/2" Nylon Lock Nuts	
8 - 3/8" x 1" Bolts	

## Note: Completely read instructions before beginning installation!

1. Remove the contents from the box and check for missing pieces or damage. If parts are missing or damaged, contact the original place of purchase.
2. The design of the steps on some applications will allow them be mounted on either side with the brackets in different locations. Hold the steps up to the driver and passenger side of the truck to determine the proper rocker panel mounting locations that will be used. Mark the locations for the bracket installation in the following steps.
3. In the marked locations, insert (1) V-bolt plate #42322-25 (shown in **Diagram #3**) through the large top hole twisting it into the rocker. Once the V-bolt plate is inside the rocker panel, align the threaded nuts with the in two bottom holes. **Diagram #4** shows an outline reference of the #42322-25 installed in the rocker panel without the main bracket covering it up. **The top stud needs be held to keep it from falling into the rocker panel.** If the V-bolt plate falls into the rocker panel a magnetic pick up tool is usefull to retrieve it.
4. A second person may be needed for this step to help hold the brackets. Holding the top stud, gently position bracket #42364-5 (shown in **Diagram #2**) over the top of the stud. Align the threaded nuts on the V-bolt plate, the holes in the rocker panel, and the holes in the bracket #42364-5. Continue holding the top stud. Place (1) 3/8" lock washer and (1) 3/8" flat washer onto (1) 3/8" x 1" bolt. Place (1) bolt with washers into each of the (2) bottom holes. Now install (1) 3/8" flat washer and (1) 3/8" nylon lock nut onto the top stud. Do not fully tighten down all bolts and nuts. Repeat the procedure for all V-bolt plates #42322-25 and brackets #42364-5 in the marked locations. **Diagrams #5 & 6** show the brackets fully installed.
5. Place the step onto the brackets, as shown in **Diagram #7**. Place (1) 1/2" flat washer onto each of the 1/2" x 1 1/2" bolts needed to attach the step to the brackets. Place (2) bolts with washer through the (2) step mounting holes and the bracket. Place (1) 1/2" flat washer and (1) 1/2" nylon lock nut onto each of the bolts. The step can be placed forward or rearward on the brackets and the mounting hardware can be placed either bolt or nut side forward.
6. Tighten brackets to truck first then tighten the 1/2" hardware attaching the step to the brackets. **Do not use a pneumatic impact to tighten hardware.**



1235 W. Trinity Mills Rd.  
Carrollton, Texas 75006  
Tele: (800) 527-2006  
www.earlowen.com  
www.cattlemanhd.com

# Diamond Tread Steps

Installation Instructions

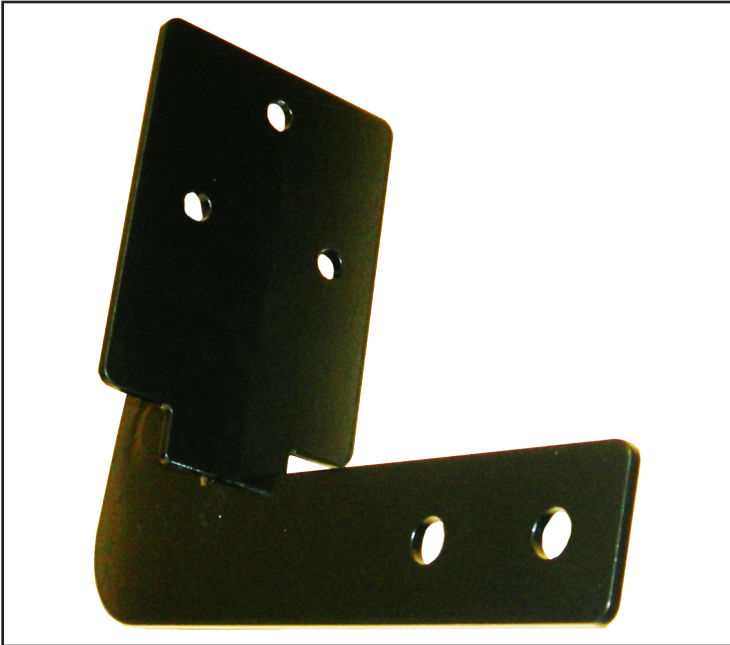
**810350**

Dodge Ram 2500-5500

Regular Cab

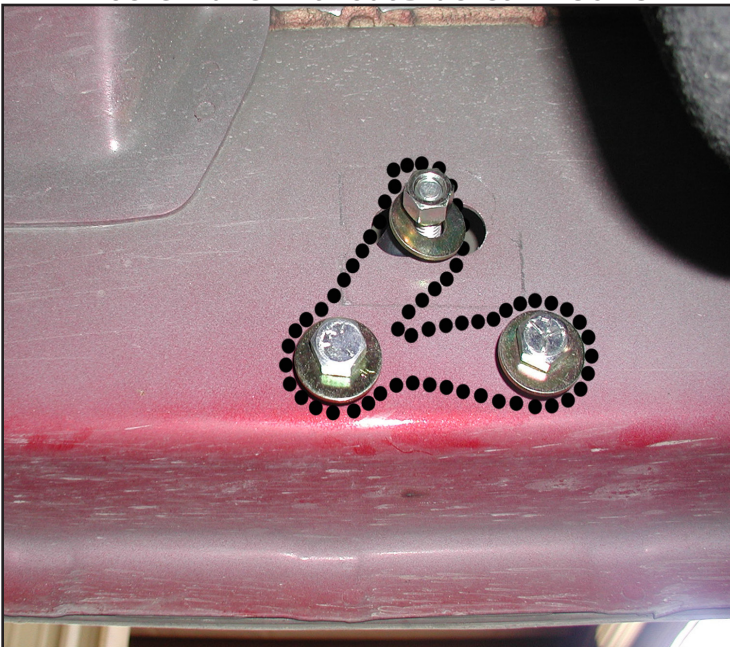
'10 -'14

**Bracket #42764-5**



**Diagram 2**

**Outline of V-Bolt Plate #42322-25 Installed in The  
Rocker Panel with out Bracket #42364-5**



**Diagram 4**

**V-bolt plate #42322-25**



**Diagram 3**

**View Of Bracket #42764-5  
Mounted to Rocker Panel**



**Diagram 5**





1235 W. Trinity Mills Rd.  
Carrollton, Texas 75006  
Tele: (800) 527-2006  
www.earlowen.com  
www.cattlemanhd.com

# Diamond Tread Steps

Installation Instructions

**810350**

Dodge Ram 2500-5500

Regular Cab

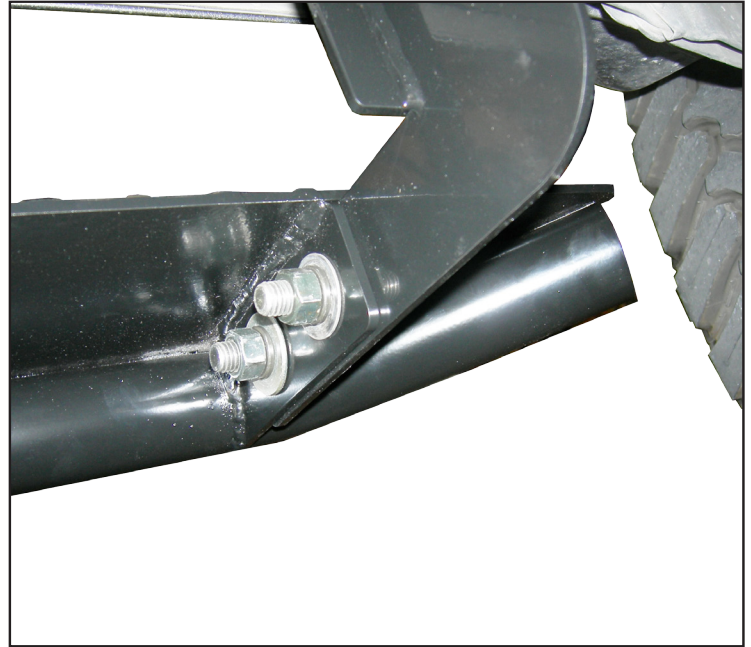
'10 -'14

**Bracket #42764-5 Installed on  
The Front Driver Side**



**Diagram 6**

**Step mounted in the rear to Bracket #42764-5**



**Diagram 7**