

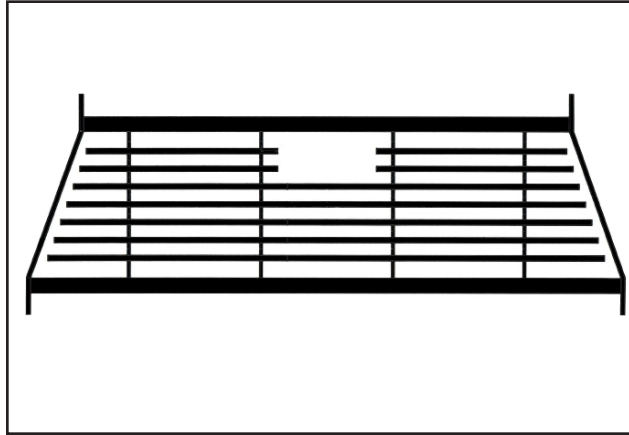
420 N. Grove, Richardson, TX 75081
 Tele: (800) 527 - 4345 Fax: (800) 442 - 5263
 Web site: www.goindustries.com
 E-mail: gosupport@goindustries.com

Flat Iron Headache Rack

Installation Instructions

20756 / 20756B

Ford F-150 2015 - 2019



Parts List:

- 1) - Flat Iron Headache Rack
 - 1) - 20755-1 Driver Foot
 - 1) - 20755-2 Pass. Foot
 - 2) - 20752-6 Spacers
 - 2) - 20752-8 Lock Brackets
 - 4) - 20752-8A Rubber Edge Guards
 - 4) - 20755-11 Aluminum Bracing Strips
- Hardware Kit # 20792KIT Contents:**
- 4) - 1/2" x 2" Bolts
 - 8) - 1/2" Flat Washers
 - 4) - 1/2" Hex Nuts
 - 6) - 3/8" x 1 1/2" Bolts
 - 6) - 3/8" Steel Flat Washers
 - 4) - 3/8" Aluminum Flat Washers for Below Al. Strips
 - 4) - 3/8" Hex Nuts *May include Extra Hardware*

Note: Completely read instructions before beginning installation!

1. Remove the contents from the box and check for missing pieces or damage. If parts are missing or damaged, contact the original place of purchase.
- *Tip: Place masking tape on the top surface of the bed caps in the installation area. This will help protect the surface of the bed caps and also will provide a surface to clearly mark the locations for drilling the mounting holes. (Diagram 1)**
2. Mark down the center line of the stake pocket hole along the bed cap and then mark across to get the measurements for the hole location of the lock bracket.
 3. The supplied spacers will be placed in between the rack and the feet and bolt together using the 1/2" hardware supplied in the kit. The feet have two sets of bolt holes for 1" height of adjustability, seen in **Diagram 4**.
 4. Gently set rack with attached feet on top of the bed caps where it will be in its final position, and mark the outline of the feet on to the bed rail cap
 5. Remove the rack from truck and unbolt feet from the rack taking note of the foot and spacer orientation.
 6. Transfer the lock bracket hole location to the feet of the headache rack. The remaining two holes will be approximately 5/8" outside of the inner bed rail edge. If mounting a tool box you will need to determine the desired location of the bolts inside of the toolbox, drill the feet and bed rail, and then transfer that measurement on the toolbox for drilling so that all holes line up and the toolbox functions without interference. Begin each hole by making a pilot hole with a 1/8" drill bit on the center of the marks. After this use a 7/16" drill bit to drill the final size of the mounting holes for your headache rack. **(Diagram 3)** Clean up any shavings or debris from the installation area. ***If you used the masking tape you may now remove it from the bed caps at this time***
 7. To assemble the lock brackets, remove the strip that protects the adhesive inside of the rubber edge guards and place them on the contact ears of the lock brackets as seen in **Diagram 5**. Place one assembled lock bracket into the stake pocket on each side as in **Diagram 6**. You may use tape or a zip tie to hold this bracket in place temporarily.
 8. Look on the underside of the bed rails for the plastic clips that secure the bed caps to the bed rails and trim the ones closest to the drilled mounting holes so that they are flush with the underside of the bed rails **(Diagram 3)** Reassemble the rack onto the feet and reposition the rack back onto the truck's bed caps.
 9. Gently lift one side of the rack and place one 3/8" bolt with a 3/8" lock washer and a 3/8" flat washer through the foot where the lock bracket will be located in the stake pocket. Carefully lift the lock bracket up towards the top of the stake pocket utilizing the access hole in the bed side of the stake pocket. Begin threading the 3/8" bolt into the lock plate and loosely tighten at this time. Repeat for the other side.
 10. Insert the (4) remaining 3/8" bolts with (4) 3/8" flat washers (1 bolt and 1 washer for each mounting hole) through the mounting holes in the rack feet (or toolbox and rack feet if used) and the bed rails, then place the aluminum bracing strips under the bed rails using (4) 3/8" flat washers and (4) 3/8" nylon lock nuts (1 flat washer and 1 nylon lock nut per mounting bolt) to secure them. Realign the rack and tighten all of the mounting hardware.

Note: Re-check all hardware for proper tightness upon completion and periodically inspect hardware and parts for signs of wear throughout the life of the product.

*****Disclaimer*****

If a light bar or any other product is mounted to the top of the rack, possible bed damage could occur. This along with improper installation or deviation from the installation instructions that cause damage to the body structure will not be covered by the manufacturer.

Flat Iron Headache Rack

Installation Instructions

20756 / 20756B

Ford F-150 2015 - 2019

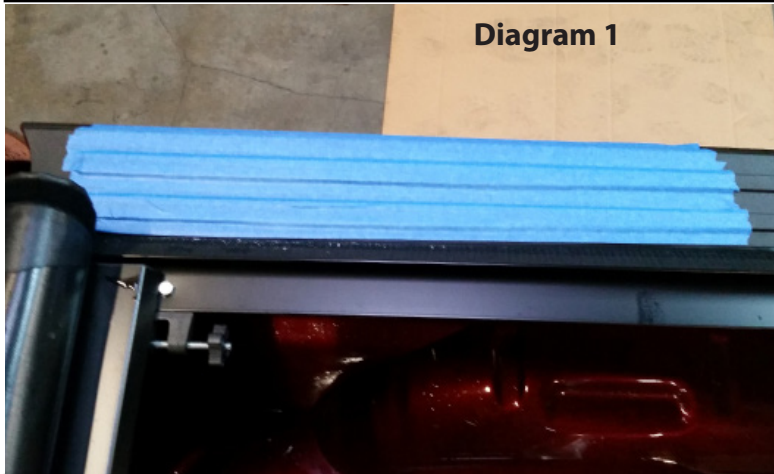


Diagram 1

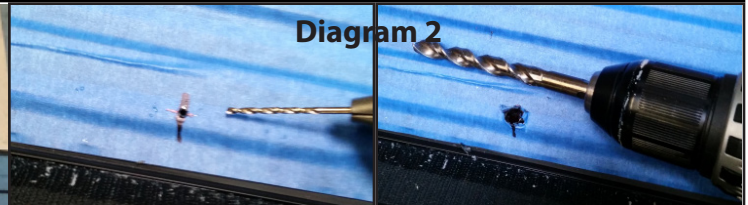


Diagram 2



Diagram 3



Diagram 4



Diagram 5



Diagram 6