

# Quad-Guard

Installation Instructions

## 32666

Dodge Ram 1500 '09-'12

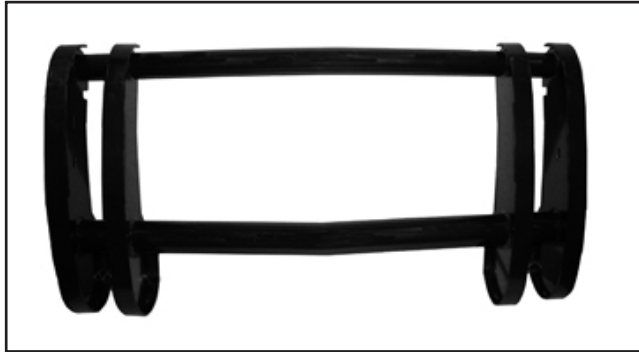


Diagram 1

**Parts List:**

- |                                  |                        |
|----------------------------------|------------------------|
| 1 - Quad Guard                   | 14 - 1/2" Flat Washers |
| 1 - Driver Side Bracket #46666-5 | 10 - 1/2" Lock Washers |
| 1 - Pass. Side Bracket #46666-6  | 10 - 1/2" Hex Nuts     |
| 6 - 1/2" x 1 1/2" Carriage Bolts |                        |
| 4 - 1/2" x 1 1/2" Bolts          |                        |

\*May include extra hardware.

**Note: Completely read instructions before beginning installation!**

1. Remove the contents from the box and check for missing pieces or damage. If parts are missing or damaged, contact the original place of purchase.
2. **Install the driver bracket #46666-5:** Using **Diagram 2**, locate the driver bracket #46666-5. Remove the tow hook. Place driver bracket #46666-5 along with the tow hook into the tow hook opening and onto the two bolts on the frame. Using **Diagram 3**, push the driver bracket under the top plastic cover. Put a 1/2" x 1 1/2" carriage bolt into the bracket. Replace the factory nuts and bolts. Put (1) 1/2" flat washer, (1) 1/2" lock washer and (1) 1/2" hex nut on the carriage bolt behind the bumper. Hand tighten at this time. Repeat the above procedure to install the passenger top bracket #46666-6.

View of Driver Bracket #46666-5

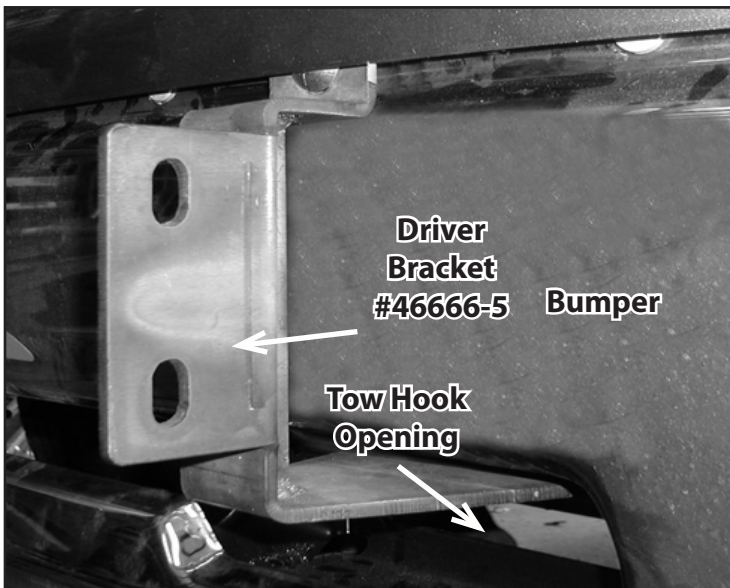


Diagram 2

View of Carriage Bolt

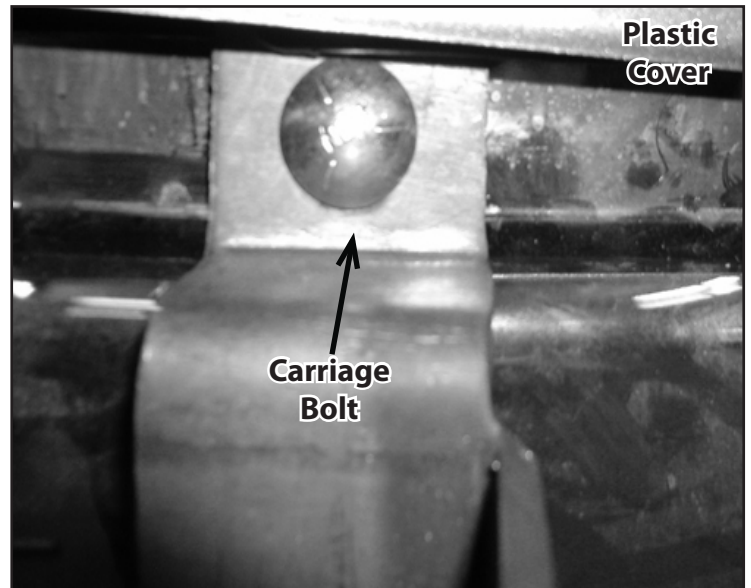


Diagram 3

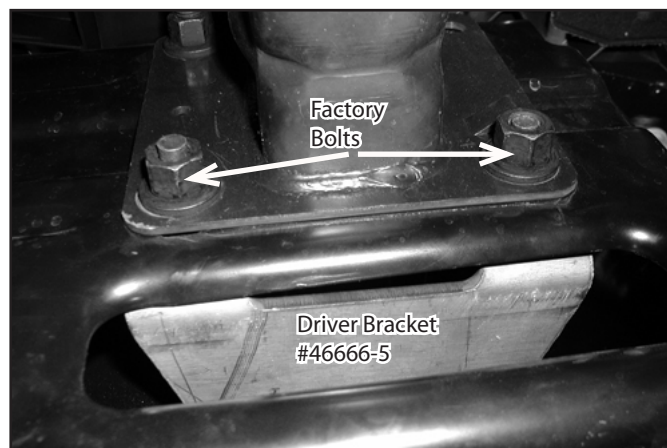
## Quad-Guard

Installation Instructions

**32666**

Dodge Ram 1500 '09-'12

### View of Driver Bracket #46666-5 Behind the Bumper



**Diagram 4**

- Using **Diagram 4**, to show the alignment of the bracket to the end of the frame.
- Install the Quad Guard to the brackets:** Using two people place the Quad Guard up to the brackets. On the brackets use (4) 1/2" x 1 1/4" bolts with (1) 1/2" flat washer per bolt. Place the 1/2" x 1 1/2" bolt through the holes in the upright on the Quad Guard and into the brackets. Place (1) 1/2" flat washer, (1) 1/2" hex nut onto each of the 1/2" x 1 1/2" bolt. Hand tighten at this time.
- Center the Quad Guard on the vehicle.** Tighten the brackets to the vehicle first, then tighten all bolts on the Quad Guard ensuring that the Quad Guard remains centered on the vehicle. Make sure Quad Guard is pushed all the way up on the slots.