



Police Grille Guard

Installation Instructions

38007

Ford Crown Victoria '03 - '09

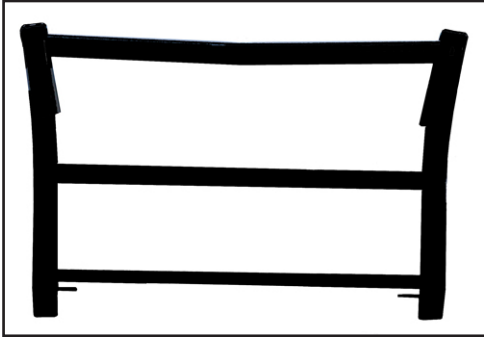


Diagram 1

Parts List:

- | | |
|------------------------------------|------------------------------|
| 1 - Police Grille Guard | 4 - 3-8" x 1 3/4" T-Bolts |
| 1 - Driver Top Bracket #38007-5 | 4 - 1/2" x 1 1/2" HH Bolts |
| 1 - Passenger Top Bracket #38007-6 | 4 - 3/8" Flat Washers |
| 2 - Back Brace #38007-7 | 8 - 3/8" x 1 1/4" HH Bolts |
| 2 - Rectangle Spacers 3/8" Thick | 12 - 3/8" Hex Nuts |
| 2 - 1/2" Flat Washers | |
| 4 - 1/2" Hex Nuts | * May include extra Hardware |
| 4 - 1/2" Lock Washers | |

1. Remove the contents from the box and check for missing pieces or damage. If parts are missing or damaged, contact the original place of purchase. Read the instructions completely before beginning.
2. Locate the center of the front bumper. Measure the trim channel 13 3/4" and 16 3/4" from the center of the bumper and mark the bumper to be cut out as shown in **Diagram 2**. Repeat the procedure for the other side. Cut out the areas on the bumper fascia.
3. Remove the bumper fascia and the radiator air deflectors from the vehicle. On the driver side, locate the section of plastic insulator with the exposed rivet and bumper bolt. Using a utility knife cut along the seams and around the rivet. Remove the section of plastic insulator.
4. Locate the four bolts securing the bumper to the reinforcement bracket. Loosen the 2 outer bolts and remove the 2 bolts toward the center. Also remove the u-nuts behind the bumper.
5. Attach the driver top bracket #38007-5 to the bumper using the 3/8" t-bolts as shown in **Diagram 3**. Hand tighten the bolts. Repeat the procedure for the passenger top bracket #38007-6.

View of Front Bumper

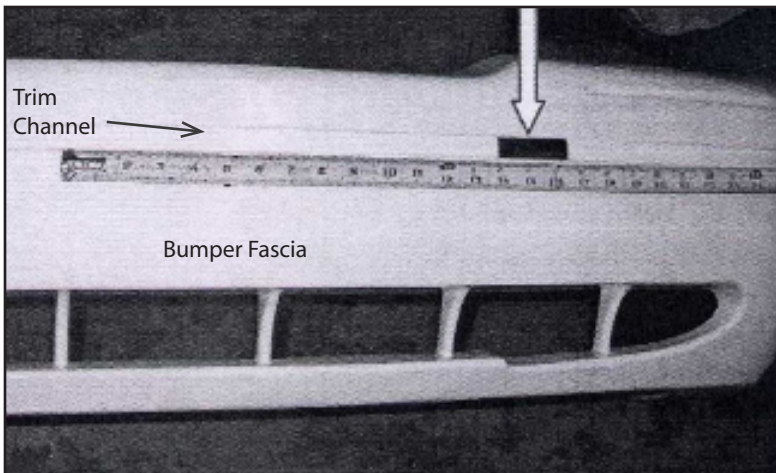


Diagram 2

View of Driver Top Bracket #38007-5

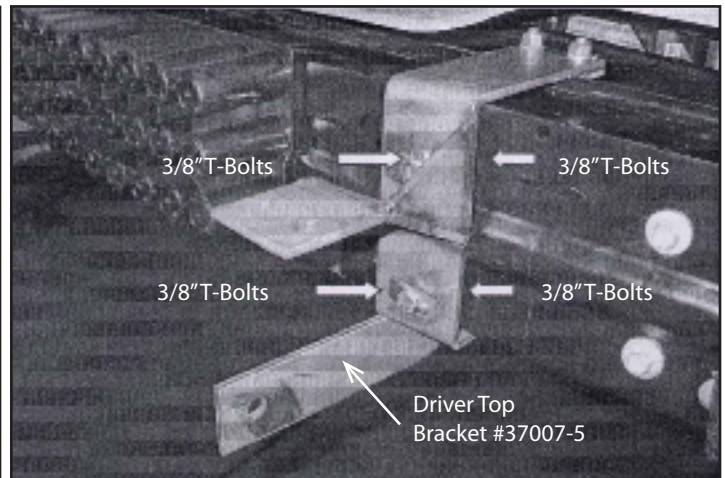


Diagram 3

420 N. Grove, Richardson, TX 75081
 Tele: (800) 527 - 4345 Fax: (800) 442 - 5263
 Web site: www.goindustries.com
 E-mail: gosupport@goindustries.com

6. Install the back brackets #38007-7 to the driver top bracket #38007-5. Place the back brace #38007-7 up to the driver top bracket #38007-5 as shown in **Diagram 4**. Attach the back brace #38007-7 with (1) 3/8" x 1 1/4" HH bolts, (1) 3/8" flat washers and (1) 3/8" hex nut to the top of the driver top bracket #38007-5. Use (1) 1/2" x 1 1/2" HH bolt with (1) 3/8" rectangle spacer, (1) 1/2" flat washer and (1) 1/2" hex nut to attach the bottom of the back brace #38007-7 to driver main bracket #38007-5. Repeat the procedure for the passenger top bracket #38007-6 and back brace 38007-7. Tighten the factory bolts and all bolts as shown in **Diagram 5**.

7. Reinstall the bumper fascia using the factory fasteners and pushpins as shown in **Diagram 6**. Trim the radiator air deflectors to fit around the brackets. Place the grille guard up to the brackets as shown in **Diagram 7**. Use (4) 3/8" x 1 1/4" HH bolts with (8) 3/8" flat washers, (4) 3/8" lock washers and (4) hex nuts to attach the grille guard to the brackets. Tighten all bolts ensuring the grille guard remains centered on the vehicle.

View of Back Brace #38007-7

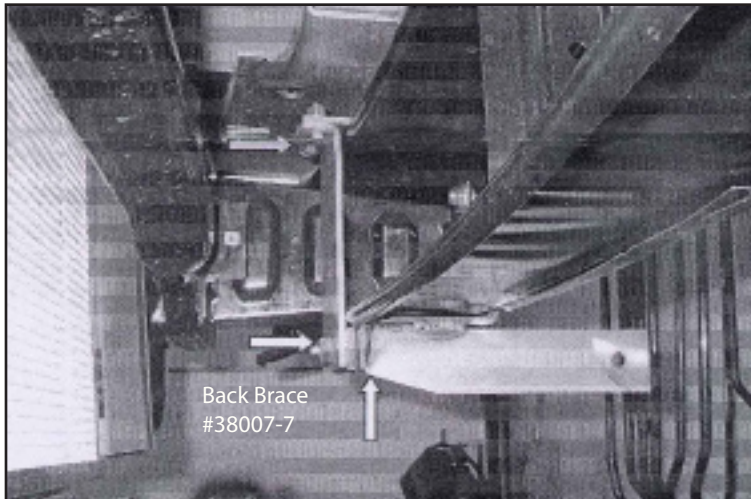


Diagram 4

View of Driver Top Bracket #38007-5

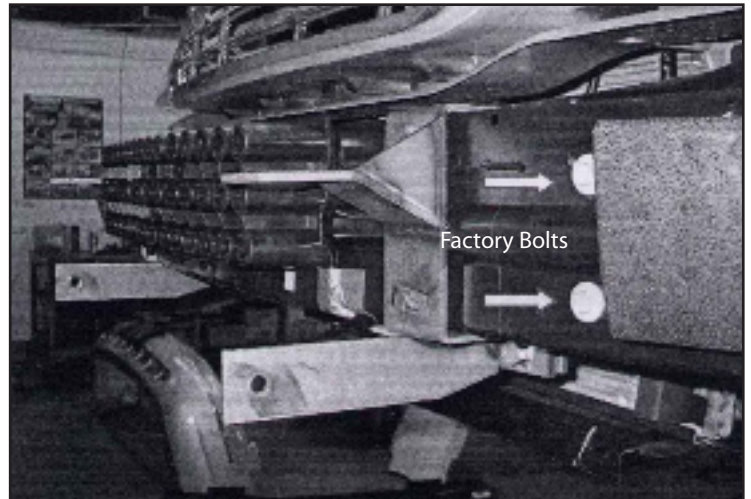


Diagram 5

View of Brackets Through the Front Fascia



Diagram 6

View of Grille Guard Attached



Diagram 7