



Parts List:

- 1 - Trunk Tray #38305-1
- 1 - Driver Side Main Bracket #38305-3
- 1 - Passenger Side Main Bracket #38305-4
- 1 - Driver Side Slider #38305LS
- 1 - Passenger Side Slider #38305RS

1. Remove the contents from the box and check for missing pieces or damage. If parts are missing or damaged, contact the original place of purchase. Read the instructions completely before beginning.

View of Carpet

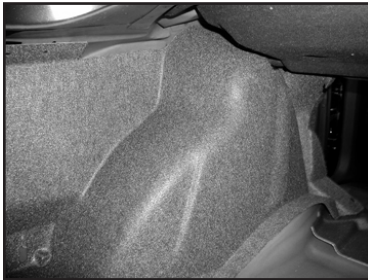


Diagram 1

View of Carpet Removed

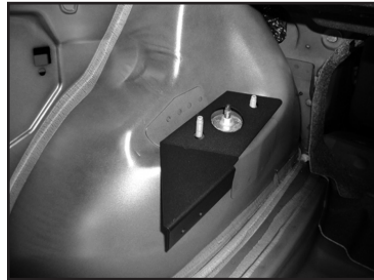


Diagram 2

View of Slider & Driver Main Bracket

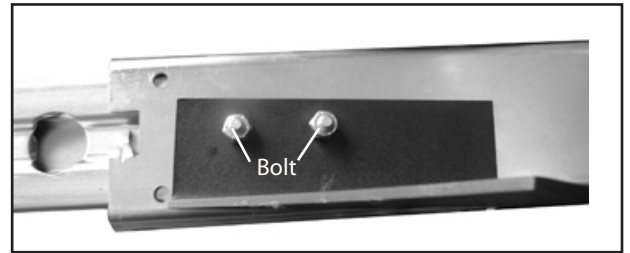


Diagram 3

View of Side Bracket Attached to Slider

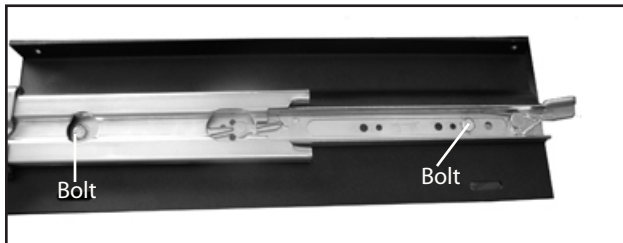


Diagram 4

View of Carpet Cut Out
& Bracket Attached

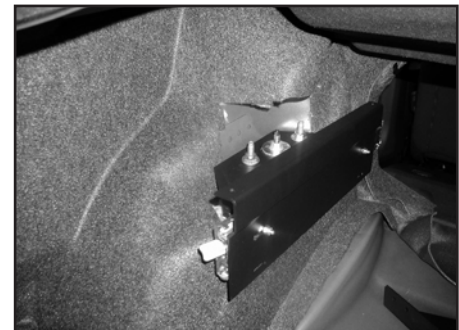


Diagram 5

2. Remove all pop rivets from the carpet in the trunk. Remove the carpet from the driver side using Diagram 1.
3. Place bracket onto the shocks bolts as shown in Diagram 2. Place the carpet over the bracket and mark the carpet to be cut out. Cut out the carpet and place the carpet back in place.
4. Assemble the main bracket to the slider as shown in Diagram 3. Place the bracket onto the shocks bolts. Align the slider with the bracket so slider will move towards the rear of the vehicle. Place the bolts through the slider into the bracket place 2 nuts onto the bolts and tighten. Open the slider and attach the side bracket using (2) bolts as shown in Diagram 4. Replace the carpet before attaching bracket. Tighten all bolts then place the bracket onto the bolts and use nuts to attach the bracket to the bolts as shown in Diagram 5. Repeat the above procedure for the other side of the vehicle.