

Enforcement Series P.I.T. Bumper

Installation Instructions

41027 / 41927

Dodge Charger 2015 - 2019



****This unit does require modification of the bumper cover****
Completely read instructions before beginning installation!

1. Remove the contents from the box and check for missing pieces or damage. If parts are missing or damaged, contact the original place of purchase. Two people are strongly recommended for this install.
2. You will first need to remove the bumper cover from the vehicle. You will remove the plastic radiator filler panel between the radiator and the front bumper, the plastic splash guards below the engine, as well as the front air dam where it bolts to the bumper cover. You will also unfasten the inner fender wells where they are attached to the front bumper cover. There are also several bolts that hold the bumper cover to the front fenders, located just above the corner of the headlights on the inside of the front fenders, that will need to be removed. You may now also unplug the side marker lamps from the bumper cover. Once these are disconnected, along with all hardware and fasteners, you may remove the bumper cover and set aside for trimming later. **Diagram 1**
3. Once the crash bar is exposed, remove the (8) factory bolts that hold the crash bar to the front frame stub. Once the factory bolts are removed, drill out the spot welds above and below the crash bar on each side. (**Diagram 2, 3, & 4**). Use a pry bar to separate the bumper reinforcement from the crash bar and remove from the vehicle. Since they will not be re-used, you may cut and grind the spot weld tabs on the crash bar if preferred.

Parts List:

- 1 - Grill Guard
- 2 - PIT Arms 41927-4
- 1 - Driver Main Bracket 41027-51
- 1 - Pass. Main Bracket 41027-61
- 1 - Driver Top Bracket 41027-52
- 1 - Passenger Top Bracket 41027-62
- 1 - Driver Bottom Bracket 41027-53
- 1 - Passenger Bottom Bracket 41027-63
- 2 - Clamp Brackets 41027-54
- 2 - Crash Bar Extension Plate 41027-57
- 2 - PIT Knuckle 41927-8

Installation Hardware: Push Bumper

- 24 - 1/2" - 13 x 1 1/2" Hex Bolts
- 40 - 1/2" Flat Washers (1 3/8" Diameter)
- 8 - 1/2" Flat Washers (1" Diameter)
- 24 - 1/2" Lock Washers
- 24 - 1/2"-13 Hex Nuts
- 12 - 10-24 x 3/8" Buttonhead Bolts

Installation Hardware: PIT Arms

- 2 - 1/2" - 13 x 4 1/2" Hex Bolts
- 4 - 1/2" - 13 x 2" Hex Bolts
- 8 - 1/2" Flat Washers
- 4 - 1/2" Lock Washers
- 2 - 1/2"-13 Nylon Locking Nuts
- 2 - 1/2"-13 Flanged Hex Nuts
- 4 - 3/8"-16 x 6" Hex Bolts
- 8 - 3/8" Flat Washers
- 4 - 3/8"-16 Nylon Locking Nuts
- 14 - #10 Flat Washers
- 14 - 10-32 Nylon Locking Nuts

*May include extra hardware.





420 N. Grove, Richardson, TX 75081
 Tele: (800) 527 - 4345 Fax: (800) 442 - 5263
 Web site: www.goindustries.com
 E-mail: gosupport@goindustries.com

Enforcement Series P.I.T. Bumper

Installation Instructions

41027 / 41927

Dodge Charger 2015 - 2019

- If installing the PIT arms, you may loosely bolt the crash bar extensions (41027-57) onto the ends of the crash bar at this time. Place the 3/8" x 6" bolts with a 3/8" flat washer from the top side of the crash bar down and thread the 3/8" nylon locking nut with a flat washer on the exposed threads of the bolt. **Diagram 5**
- Next, you will reinstall the crash bar with the main mounting brackets (41027-51 Driver & 41027-61 Passenger) placed between the crash bar and the front frame stub using the (8) previously removed factory bolts. You may tighten down this hardware until snug as you may need to adjust the brackets in step 6. Once the main brackets are secured, you may install the top (41027-52 Driver & 41027-62 Passenger) and bottom (41027-53 Driver & 41027-63 Passenger) bracket pieces per side, as well as the clamp brackets (41027-54) around the crash bar. You will use the 1/2" x 1 1/2" hex bolts, a combination of the 1/2" flat washers with a diameter of 1" and 1 3/8", and 1/2" nylon locking nuts. The 1" diameter flat washers will be used where there is minimal clearance next to the main bracket structure, hardware, or exposed welds which will not accommodate the 1 3/8" diameter washers. (**Diagram 6, 7, & 8**) Please note that the plastic air deflectors on either side of the radiator may need to be trimmed for bracket clearance.
- Fit the grille guard to the brackets using 1/2" x 1 1/2" hex bolts, 1/2" flat washers, and 1/2" nylon locking nuts. You will want to level, center, and align the grille guard on the vehicle. Once aligned, tighten down all of the grille guard mounting brackets and remove only the grille guard from the vehicle
- Now you will need to remove the plastic bumper reinforcement from the inside of the bumper cover, and trim the grille areas as shown in **Diagram 9** to allow the mounting brackets to slide through the bumper cover after reinstallation.
- Reinstall the bumper cover leaving the wheel wells separated at this time to gain access to the back of the crash bar extension bracket, and reinstall the grille guard back onto the vehicle and adjust to where it is centered and level before tightening.
- Install the rubber PIT pads onto the front of the PIT arms using the (14) #10 flat washers and (14) 10-32 nylon locking nuts. You may then install the PIT knuckle (41027-8) between the top and bottom surfaces of the PIT arm, oriented where the triangular support of the knuckle would be positioned towards the outside of the vehicle on each side. The PIT knuckle will use the 1/2" x 4 1/2" hex bolts with a 1/2" washer, from the top of the PIT arm as shown in **Diagram 10** and secured with another 1/2" flat washer and 1/2" nylon locking nut per bolt. Leave the hardware loose at this time and swing the knuckle inside of the PIT arm for initial installation to find the correct hole location for drilling the pass thru hole in the bumper cover.
- Using the (4) 1/2" x 2" hex bolts with (4) 1/2" lock washers and (4) 1/2" flat washers, install the PIT arms to the upright portions of the grille guard. Once both sides are installed, level and adjust the PIT arms and tighten this hardware.
- From the backside of the bumper cover in front of the wheel well locate the appropriate area where the hole will need to be drilled to allow for the PIT knuckle to pass through the bumper and into the plate. I have found the easiest way to do this is the see where the threaded area of the knuckle will be horizontally located, and drill a small (1/8") hole centered up and down in the bracket slot at that level. You will now need to remove the PIT arms from the grille guard in order to drill the larger pass through hole in the bumper. A 2" - 2 1/2" hole saw should be used for this step.
- Once the pass thru hole is drilled in the bumper, you may re-install the PIT arms while guiding the threaded portion of the knuckle through the pass thru hole and into the slot in the crash bar extension. Secure the PIT knuckle to the crash bar extension bracket with the 1/2" - 13 flange nut. **Diagram 10**
- Once all components are centered and level, you may tighten all hardware, and secure the inner wheel wells as well as any loose trim that is left. **Diagram 11**

Torque values are approximately 30 ftLbs. for the 3/8" Hardware and 75 ftLbs. for the 1/2" Hardware

Note: Re-check all hardware for proper tightness upon completion and periodically inspect hardware and parts for signs of wear throughout the life of the product.



420 N. Grove, Richardson, TX 75081
 Tele: (800) 527 - 4345 Fax: (800) 442 - 5263
 Web site: www.goindustries.com
 E-mail: gosupport@goindustries.com

Enforcement Series P.I.T. Bumper

Installation Instructions

41027 41927

Dodge Charger 2015 - 2019



Diagram 1

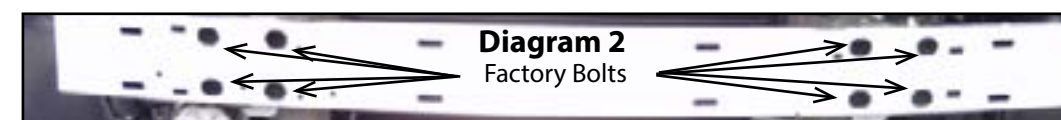


Diagram 2
Factory Bolts

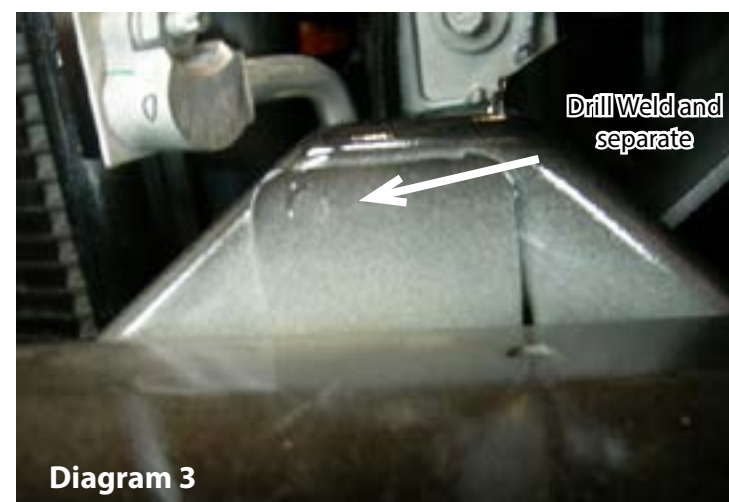


Diagram 3



Diagram 4



Diagram 5



420 N. Grove, Richardson, TX 75081
Tele: (800) 527 - 4345 Fax: (800) 442 - 5263
Web site: www.goindustries.com
E-mail: gosupport@goindustries.com

Enforcement Series P.I.T. Bumper

Installation Instructions

41027 41927

Dodge Charger 2015 - 2019

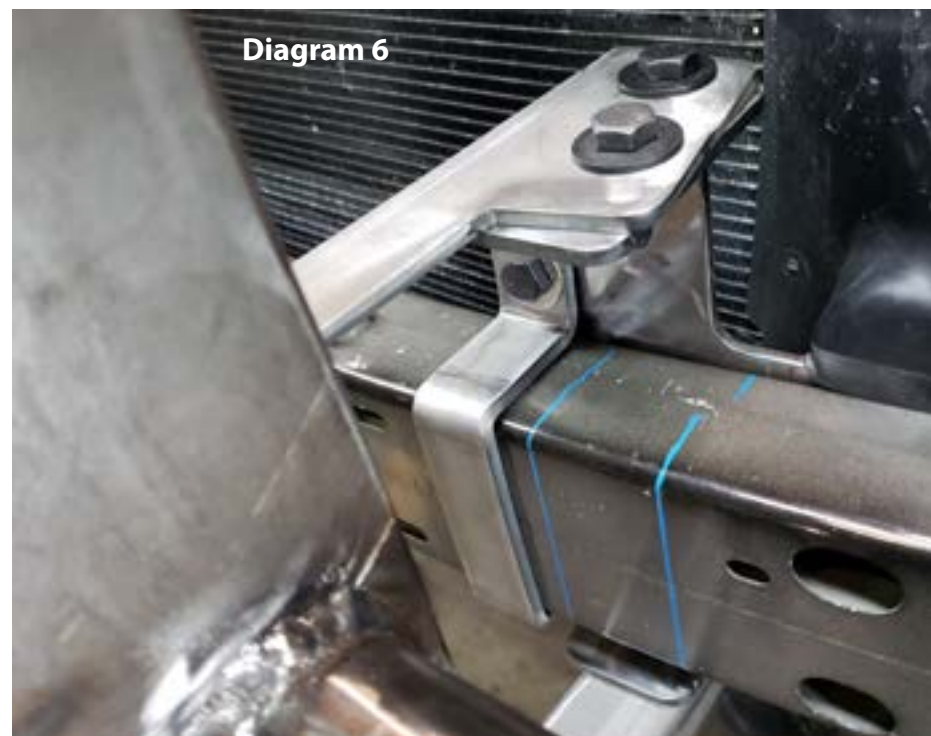


Diagram 6



Diagram 7



Diagram 8



420 N. Grove, Richardson, TX 75081
Tele: (800) 527 - 4345 Fax: (800) 442 - 5263
Web site: www.goindustries.com
E-mail: gosupport@goindustries.com

Enforcement Series P.I.T. Bumper

Installation Instructions

41027 41927

Dodge Charger 2015 - 2019



Diagram 9



Diagram 10



Diagram 11