

Enforcement Series Safe Box Headache Rack

Installation Instructions

50003 Rack

Chevy Tahoe '07 -'12

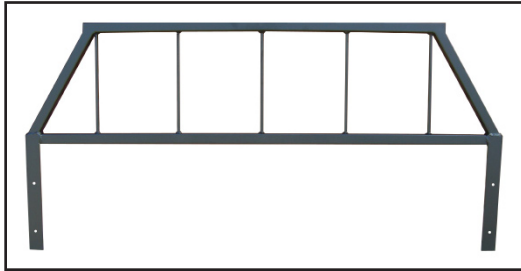


Diagram 1

Parts List:

- 1 - Headache rack
- 8 - Self tapping screws

Note: Completely read instructions before beginning installation!

1. Remove the contents from the box and check for missing pieces or damage. If parts are missing or damaged, contact the original place of purchase.
2. 50003 Box needs to be slide toward the front seat at this time, enough that the front edge will be accessible through the rear doors.
3. Place the rack onto the front side of the box as shown in **Diagram 2**.
4. Align the rack so the corners of the box are cradled into the angle iron, as shown in **Diagram 2**.
5. Make sure the rack is properly vertical, and the gap between the rack and box is close to 1/4" and even across.
6. Insert (1) self tapping screw into each of the (8) in the rack mount and tighten down.
7. After the rack mount in completed, return to the box mounting instructions to continue mounting the box.

View of Front Driver Side of Box with Rack

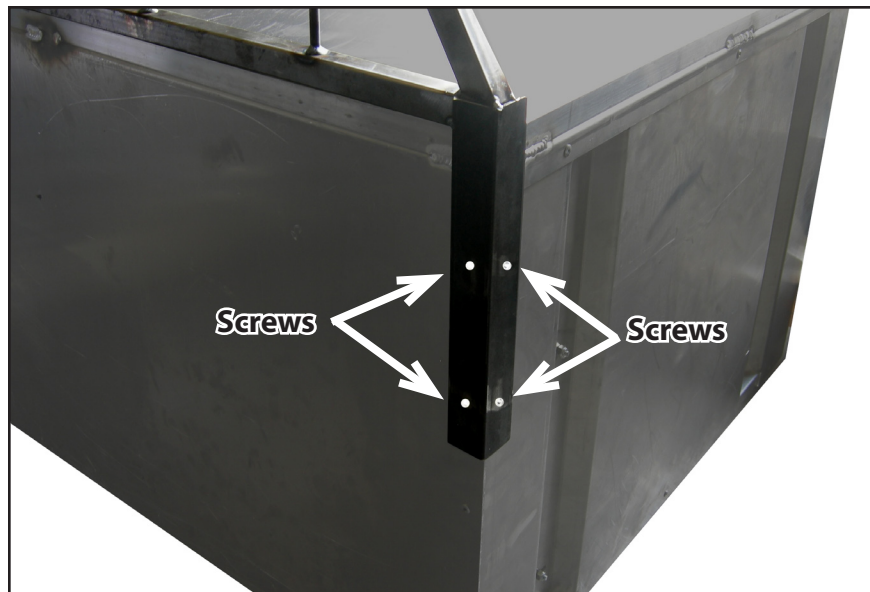


Diagram 2