

Enforcement Series

Safe Box

Installation Instructions

50015

Ford Interceptor SUV
'12 - '17



Diagram 1

Parts List:

1 - Box with Drawer Installed	1 - Pass. Side Brace #50015-10 (Diagram 5)
1 - Frame Support #50015-4 (Diagram 2)	2 - Brackets #50015-11 (Diagram 6)
2 - Brackets #50015-5 (Diagram 3)	4 - 1/4" x 1 1/4" Carriage Bolts
1 - Drivers Side Support #50015-7 (Diagram 4)	4 - 1/4" Flat Washers
1 - Pass. Side Support #50015-8 (Diagram 4)	4 - 1/4" Nylon Lock Nuts
1 - Drivers Side Brace #50015-9 (Diagram 5)	30 - #10 x 1" Self Tapping Screws

***May include extra hardware.**

Note: Completely read instructions before beginning installation!

1. Remove the contents from the box and check for missing pieces or damage. If parts are missing or damaged, contact the original place of purchase.
2. Several items need to be removed from the vehicle at this time, **Diagram 7** can be used for reference. The spare tire cover and the spare tire need to be removed first. The floor panel just in front of the spare tire cover and behind the seat needs to be removed, followed by the foam around the spare tire.
3. Reinstall the floor panel removed in step 2, but do not install the factory bolts.
4. Locate the frame support #50015-4 which is shown in **Diagram 2**, and brackets #50015-5 which are shown in **Diagram 3**. Place (1) bracket #50015-5 into the small divot in the floor panel on both the driver and passenger side. Place the factory bolts through both brackets and thread into the factory spot, do not fully tighten. Using **Diagram 8**, position the frame support #50015-4 on the brackets as shown. Hold the frame support to the brackets to keep them square and tighten the factory bolts. Remove the frame support from the vehicle at this time.
5. Use caution on this step, as the box can become unstable and flip over. Slide the drawer in the box fully out. On each slider is a triangle piece that needs to be pushed up and the drawer pulled out simultaneously, which is shown in **Diagram 9**. Fully remove the drawer by continuing to slide it out fully, once it is free of the sliders set it to the side. It is recommended to check the position of the drawer divider at this time, and readjust if for the users needs.
6. With two or more people gently flip the box, with the drawer removed, upside down. Set the upside down box down gently on any surface that will not chip or scratch the powder coating.
7. With the box upside down position the frame support #50015-4 on the box as shown in **Diagram 10**. The frame support may need gentle tapping to get it centered and flush against the box. Install (8) #10 x 1" self tapping screws, (4) front and (4) on the back as shown in **Diagrams 10 & 11**. The self tapping screws will cut through the material and thread themselves. It is advised that a small hole, smaller than the screw, be drilled as a starter for the screws as this will aid in the installation.
8. Braces #50015-9 & 10, shown in **Diagram 5**, need to be positioned and attached to the support frame and box as illustrated in **Diagram 12**. Each brace will use (2) screws in the box and (2) screws in the frame support.

Enforcement Series

Safe Box

Installation Instructions

50015

Ford Interceptor SUV
 '12 - '17

9. Two or more people are recommended for this step to protect from injury, damage to the box and vehicle. The box will need to be flipped back over and positioned in the rear of the vehicle. The center support will need to be positioned as shown in **Diagram 13**. Once the box is in position in the vehicle, the open drawer end will need to be supported or held up until the side supports are attached.
10. With the open end of the box supported locate and place side supports #50015-7 & 8, shown in **Diagram 4**, into the positions referring to **Diagrams 14 & 15**. The top of the side supports are designed, so the slides will gently rest on them. Once the correct position is achieved, use (2) screws to attach the support to the box per side. With the side supports attached to the box remove any support holding the open end of the box up.
11. Gently center the box in the vehicle at this time making sure the center frame is contacting brackets #50015-5 on the floor.
12. Using (2) screws per bracket, connect the brackets #50015-5 to the center frame, this is shown in **Diagram 13**.
13. Gently tap the side supports, positioning them as close to the plastic trim as possible. Once they are in position, use (2) screws for each side support to screw the supports to the floor of the vehicle. This can be seen in **Diagrams 14 & 15**.
14. Using (2) 1/4" carriage bolts on top and (2) 1/4" flat washers with (2) 1/4" nylon lock nuts position and attach side brackets #50015-5 to the top of the box. The brackets will need to be adjusted to just barely touching the side panels, before being tightened. The installed brackets can be seen in **Diagrams 16 & 17**.
15. Reinstall the bottom drawer removed in step 2. It is recommended again for two people to reinstall the drawer. The tab does not need to be pushed on the slider for the drawer to be reinstalled. The sliders on the box and drawer just need to be lined up and the drawer closed, that will lock the sliders.

Frame Support #50015-4

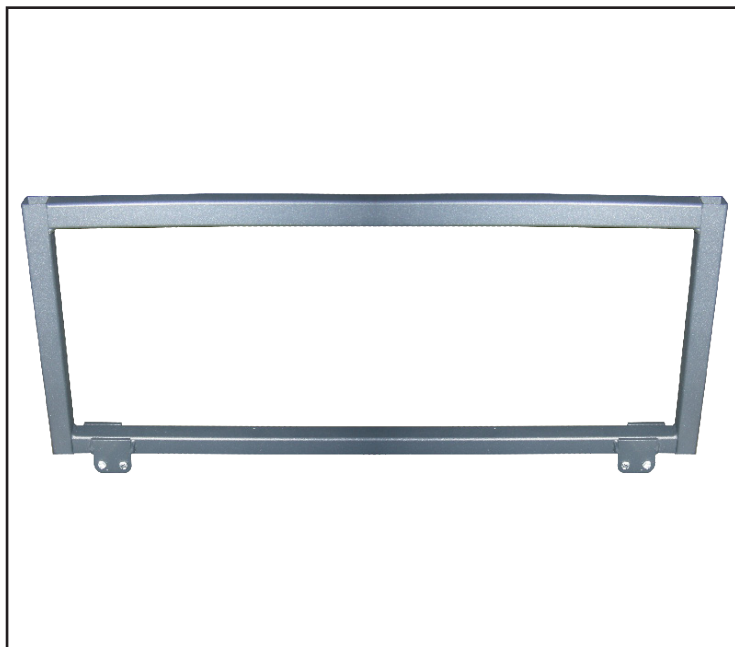


Diagram 2

Brackets #50015-5



Diagram 3

Enforcement Series

Safe Box

Installation Instructions

50015

Ford Interceptor SUV
'12 - '17

Side Supports #50015-7 & 8

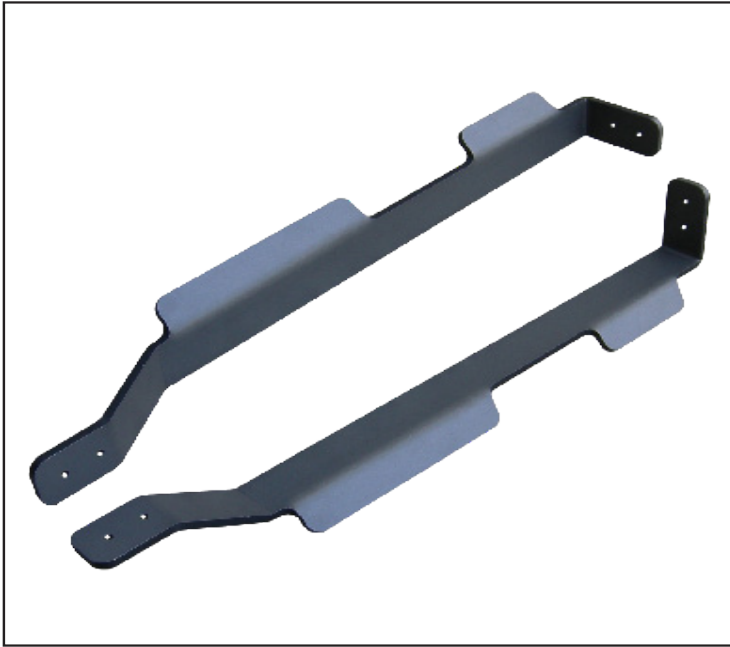


Diagram 4

Braces #50015-9 & 10



Diagram 5

Brackets #50015-11



Diagram 6

View of Rear Cargo Area with Items Removed



Diagram 7

Enforcement Series

Safe Box

Installation Instructions

50015

Ford Interceptor SUV
'12 - '17

Drivers Side Bracket #50015-5 Installation



Diagram 8

View of Slide Release

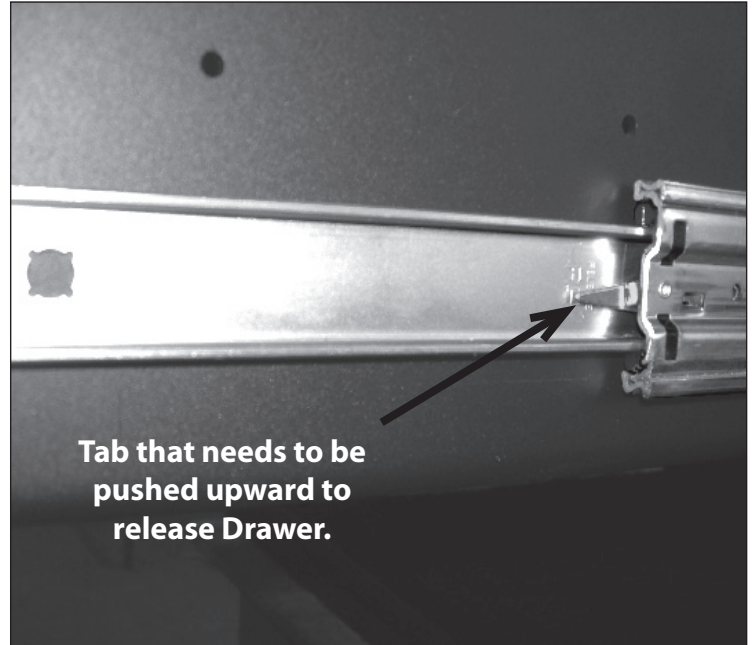


Diagram 9

Bottom Front View of Frame Support #50015-4 Installed



Diagram 10

Rear Bottom Drivers Side View of Frame Support #50015-4 Installed



Diagram 11

Enforcement Series

Safe Box

Installation Instructions

50015

Ford Interceptor SUV
 '12 - '17

Bottom View of Braces #50015-9 & 10 Installed



Diagram 12

Driver Side Bracket # 50015-5 Installed to Vehicle and Frame Support #50015-4

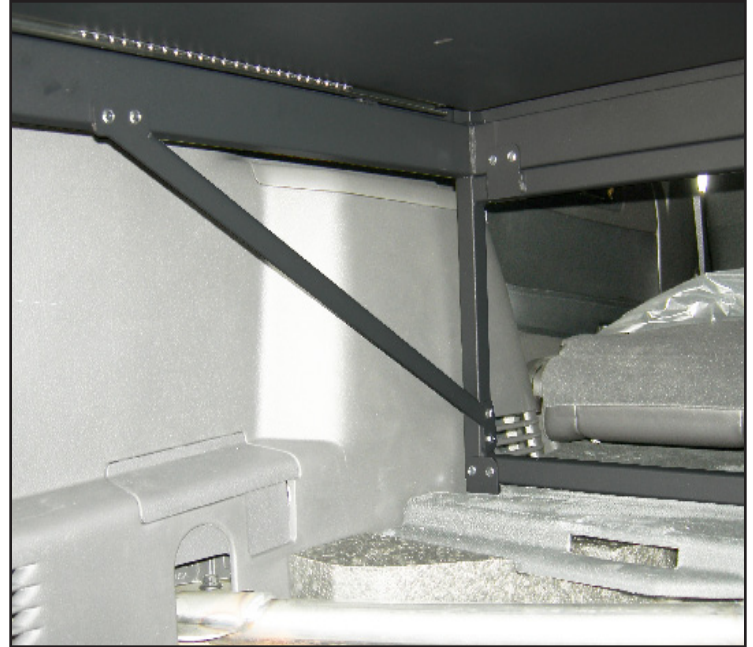


Diagram 13

Drivers Side Support # 50015-9 Installed to Truck and Box



Diagram 14

Passengers Side Support # 50015-10 Installed to Truck and Box



Diagram 15



420 N. Grove, Richardson, TX 75081
Tele: (800) 527 - 4345 Fax: (800) 442 - 5263
Web site: www.goindustries.com
E-mail: gosupport@goindustries.com

Enforcement Series

Safe Box

Installation Instructions

50015

Ford Interceptor SUV
'12 - '17

Driver Side Bracket #50015-5 Installed



Diagram 16

Passenger Side Bracket #50015-5 Installed



Diagram 17