

Rancher Front End Replacement Installation Instructions

57662

Dodge Ram '06 - '08 1500

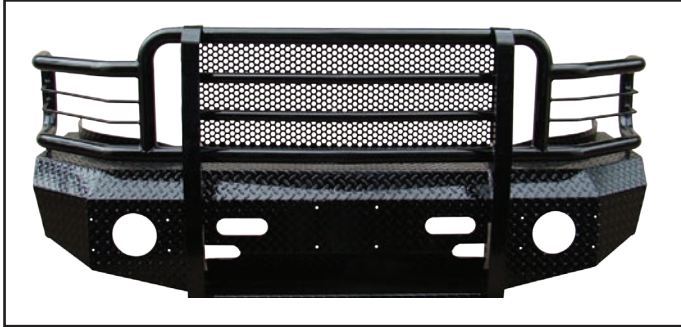


Diagram 1

Parts List:

1 - Rancher Replacement Grille Guard	8 - 1/2" Lock Washers
1 - Driver Main Bracket #57662-9	8 - 1/2" x 1 1/2" HH Bolts
1 - Passenger Main Bracket #57662-10	8 - 1/2" Hex Nuts
2 - Light Brackets #57663-43	8 - 1/4" x 1 1/2" Carriage bolts
2 - Light Brackets #57663-41	10 - 1/4" Lock Nuts
2 - 1/4" x 1" HH Bolts	16 - 1/2" Flat Washers

1. Remove the contents from the box and check for missing pieces or damage. If parts are missing or damaged, contact the original place of purchase. Read the instructions completely before beginning. Two people are strongly recommended for this install.

2. **Remove bumper with brackets:** Unplug the factory fog lamps if so equipped. Support the bumper then remove the paired bolts attaching the bumper brackets to the frame. See **Diagram 2**.

3. **Vehicles with diesel engines might require removal of the upper intercooler mounting bolts.** Using **Diagram 3**, remove the bolts then lift the intercooler enough to clear and remove the paired bolts (about 3/4"). Temporarily slide the intercooler back in place.

View of Paired Bolts

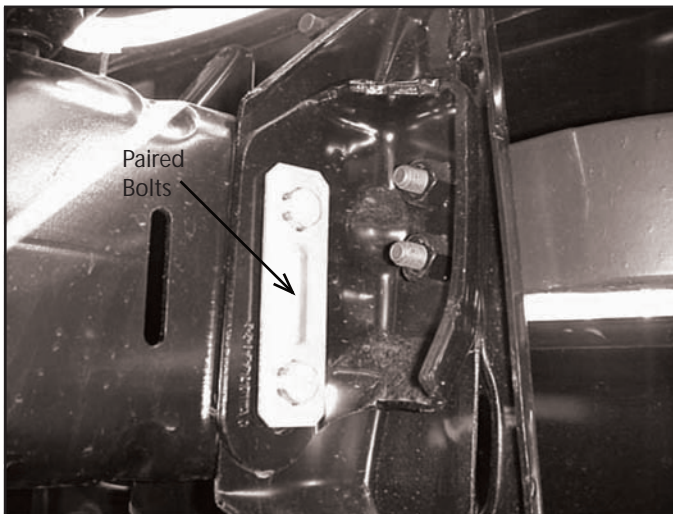


Diagram 2

View of Factory Bolt



Diagram 3

420 N. Grove, Richardson, TX 75081
 Tele: (800) 527 - 4345 Fax: (800) 442 - 5263
 Web site: www.goindustries.com
 E-mail: sales@goindustries.com

57662

4. **Install the Driver Main Brackets #57662-9 and Passenger Main Bracket #57662-10** : Using **Diagram 4** and **Diagram 5**, place bracket onto the end of the frame. Use (3) 1/2" x 1 1/2" HH bolts with (6) 1/2" flat washers and (3) 1/2" hex nuts to attach the driver main bracket #57662-9 to the end of the frame. Do not tighten. Repeat procedure for the passenger main bracket #57662-10.

5. Place the Rancher Bumper Replacement up to the brackets. Using **Diagram 6** and **Diagram 7**, slide the bracket through the opening in the rancher bumper replacement. Use (4) 1/2" x 1 1/2" HH bolts with (8) 1/2" flat washers, (4) lock washers and (4) 1/2" hex nuts to attach brackets to Rancher Bumper Replacement.. Using **Diagram 5** and **6**, put (1) 1/2" x 1 1/2" HH bolts with (1) 1/2" flat washer through from the outside of the rancher bumper replacement through the bracket and put (1) 1/2" flat washer, (1) 1/2" lock washer and (1) 1/2" hex nut onto each bolt. Repeat the above procedure for all bolts. Hand Tighten all bolts.

View of the End of the Frame



Diagram 4

View of Driver Main Bracket #57662-9 Attached to Vehicle

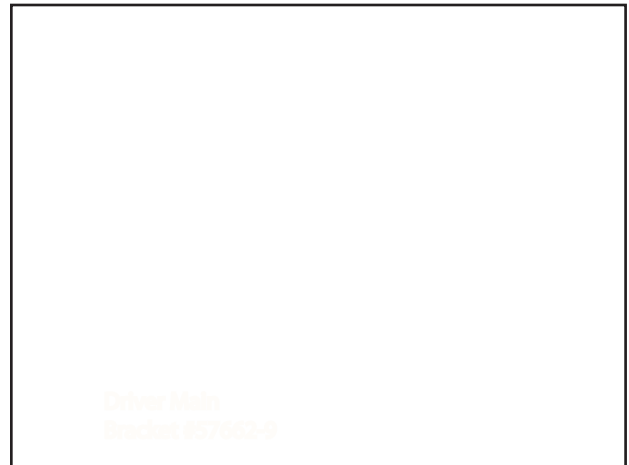


Diagram 5

View of Behind the Rancher Bumper Replacement

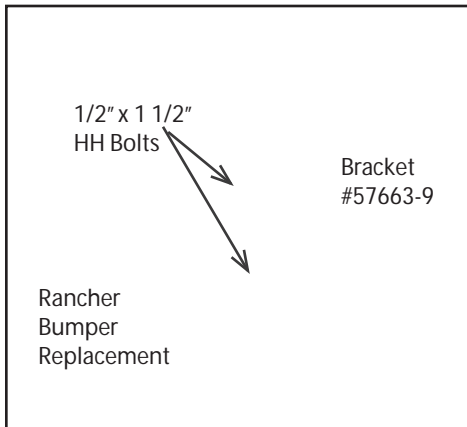


Diagram 6

View of Front of the Rancher Bumper Replacement

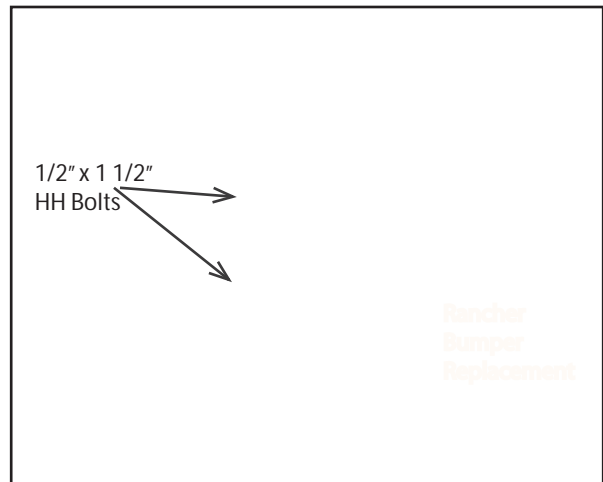


Diagram 7

