

Pro-Series Bumper Replacement

Installation Instructions

59639 / 59639W

Ford F-150 '09 - '14



Diagram 1

Parts List:

1 - Winch Replacement Grille Guard	14 - 1/2" x 1 1/2" HH Bolts
1 - Driver Main Bracket #59639-7	14 - 1/2" Hex Nuts
1 - Passenger Main Bracket #59639-8	14 - 1/2" Lock Washers
2 - Lower Brackets #59639-9	28 - 1/2" Flat Washers

1. Remove the contents from the box and check for missing pieces or damage. If parts are missing or damaged, contact the original place of purchase. Read the instructions completely before beginning. Two people are strongly recommended for this install.

2. **Remove the bumper:** Using **Diagram 2** and **Diagram 3**, remove the (4) factory nuts from the bumper. Do this on both driver and passenger side. Remove the 2 center bolts holding the top valence to the factory bumper. See **Diagram 4**. Remove the center 2 threaded plates to use on the winch bumper replacement. Loosen the mud guard below the bumper and remove the bumper. Set aside the bumper the bumper will not be reused.

View of Factory Nut To Remove

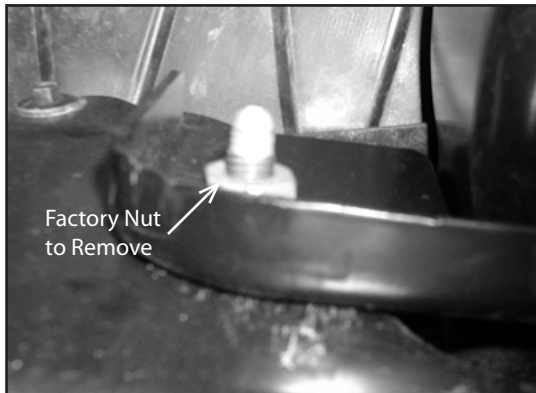


Diagram 2

View of Factory Nut To Remove



Diagram 3

View of Factory Bumper off of Vehicle

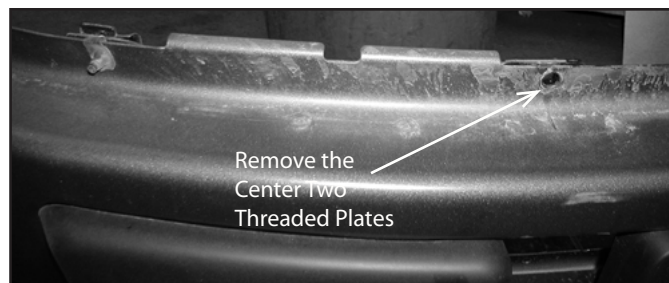


Diagram 4

Pro-Series Bumper Replacement

Installation Instructions

59639 /59639W

Ford F-150 '09 - '14

420 N. Grove, Richardson, TX 75081
 Tele: (800) 527 - 4345 Fax: (800) 442 - 5263
 Web site: www.goindustries.com
 E-mail: gosupport@goindustries.com

3. Place main driver bracket #59639-7 inside the frame, lining up the holes in the frame with the holes in the bracket. As shown in **Diagram 5** and **Diagram 6**. Place (3) 1/2" x 1 1/2" HH bolts with (1) 1/2" flat washer per bolt into the 3 holes on the bracket through the frame. Place lower bracket #59639-9 onto the 2 front bolts and place (1) 1/2" flat washer, (1) 1/2" lock washer and (1) 1/2" hex nut per bolt. Push both brackets to the outside of the vehicle to allow the winch bumper replacement to attach to brackets. Tighten all bolts ensuring brackets are pushed to the outside of the vehicle. Repeat procedure for the passenger main bracket #59639-8 and lower bracket #59639-9.

4. Place the threaded plates onto the 2 brackets on winch bumper replacement. See **Diagram 7**.

View of Driver Main Bracket #59639-7

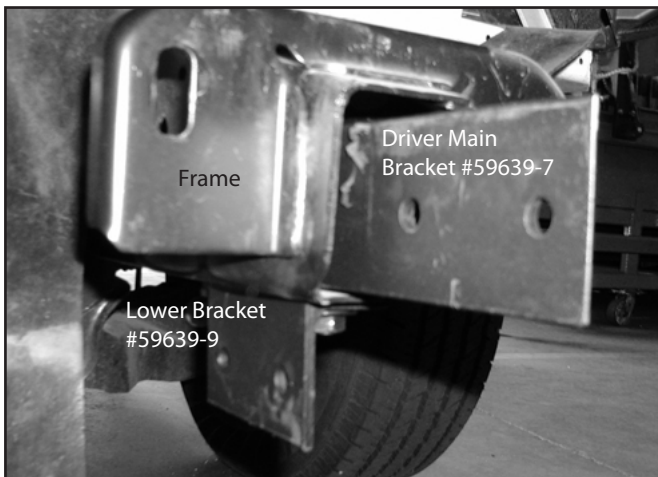


Diagram 5

View of Driver Main Bracket #59639-7 Inside Frame

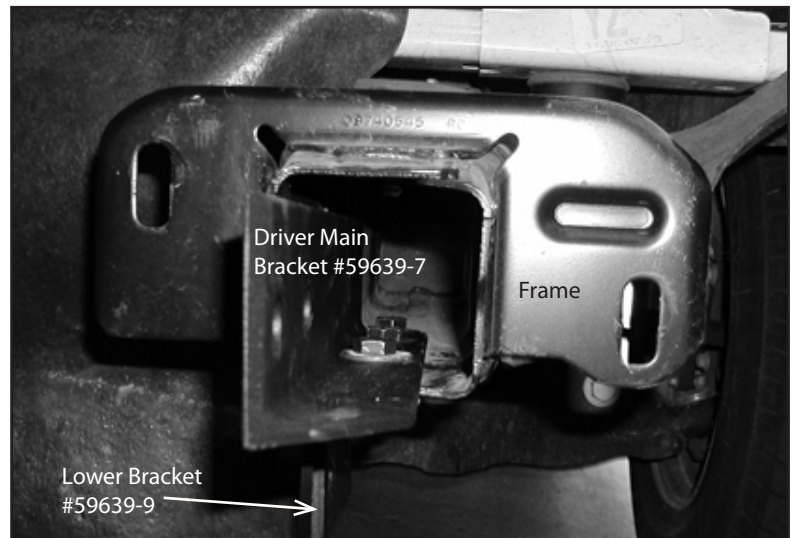


Diagram 6

View of Top Valence Factory Bolt

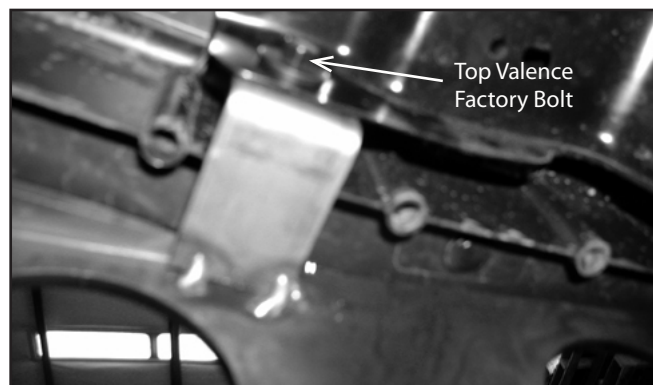


Diagram 7

Pro-Series Bumper Replacement

Installation Instructions

59639 / 59639W

Ford F-150 '09 - '14

5. Place winch bumper replacement up to brackets. Use (4) 1/2" x 1 1/2" HH bolts with (8) 1/2" flat washers, (4) 1/2" lock washer and (4) 1/2" hex nuts per hole on each side. As shown in **Diagram 8**. Tighten all bolts ensuring the winch bumper replacement is centered and with a slight gap between winch bumper replacement and the top valence. Replace the 2 factory bolts holding the top valence. Roll the mud shield and place the mud shield on top of the bottom plate, so the shield will not catch any wind. Replace the factory plastic inserts into the mud shield.

View of Passenger Side Attached to Brackets

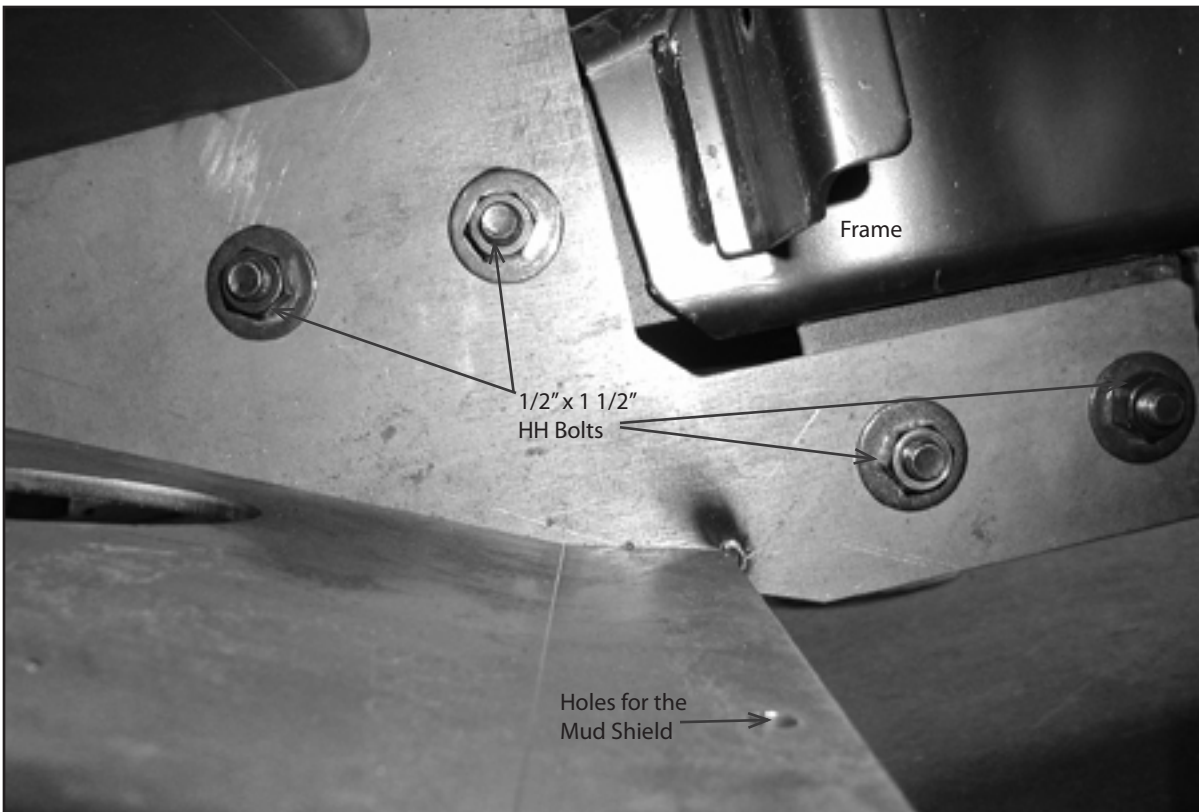


Diagram 8