

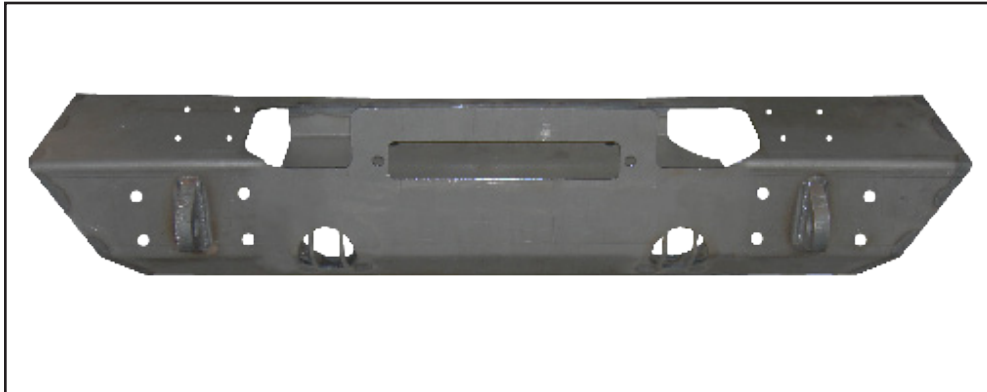
Bumper Replacement

Installation Instructions

94100

Jeep Wrangler

'07 - '17



Parts List:

- 1 - Bumper Replacement
- 8 - 1/2" x 1 1/2" Bolts
- 16 - 1/2" Flat Washers
- 8 - 1/2" Nylon Lock Nuts
- 8 - 5/16" x 3/4" Buttonhead Bolts
- 8 - 5/16" Internal Lock washers
- 6 - #8 x 3/4" Machine Screws
- 6 - #8 Washers
- 6 - #8 Nylon Lock Nuts

*May include extra hardware.

Note: Completely read instructions before beginning installation!

1. Remove the contents from the box and check for missing pieces or damage. If parts are missing or damaged, contact the original place of purchase.
2. Disconnect the factory fog light wiring from the fog lights that mount on the factory bumper.
3. Remove the front grill from the Jeep. Remove the factory plastic panel between the bumper and grill and the plastic factory skid plate. Reinstall the factory grill after the plastic panel is removed. The front of the Jeep should look like **Diagram 1** at this point.
4. Remove the factory bumper with the tow hooks with the fog lights still attached to it.
5. Remove the factory fog lights from the bumper.
6. Using **Diagrams 2 & 3**, install the fog lights in the new bumper. Each light will only use three #8 screws, washers, and nylon lock nuts.
7. Place (1) 1/2" flat washer onto each of the (8) 1/2" x 1 1/2" bolts. Use two people to lift the bumper up to the mounting brackets. Align the four holes on the end of each frame rail with the four holes on each side of the bumper. Place (1) bolt with washer through each of the eight and on the back side place (1) 1/2" flat washer and (1) 1/2" nylon lock nut onto each bolt. The bolts are shown installed with the bumper in **Diagram 4**.
8. Position and align the bumper on the truck while tightening all hardware at this time.
9. If installing a winch, it needs to be installed at this time. Follow the winch manufacturer's instructions for attaching the winch, fairlead, wiring, and related parts.
10. Reconnect the fog light wiring harness to the fog lights.
11. If installing the Bull Bar part #94300, refer to the bull bar instructions for installation. If a bull bar will not be installed at this time, place (1) 5/16" internal lock washer onto each of the (8) 5/16" button head bolts. Thread the bolts with washers into the 8 holes on the top of the bumper as shown in **Diagram 5**. The button head bolts are used as visual filler for the holes on top, if a bull bar is not used. If choosing to not install the button head bolts, they will need to be saved if the bull bar option is added at a later time, as they are the bull bar mounting hardware.

Bumper Replacement

Installation Instructions

94100

Jeep Wrangler
 '07 - '17

Factory Front Bumper Removed, Showing the Frame Rail Ends

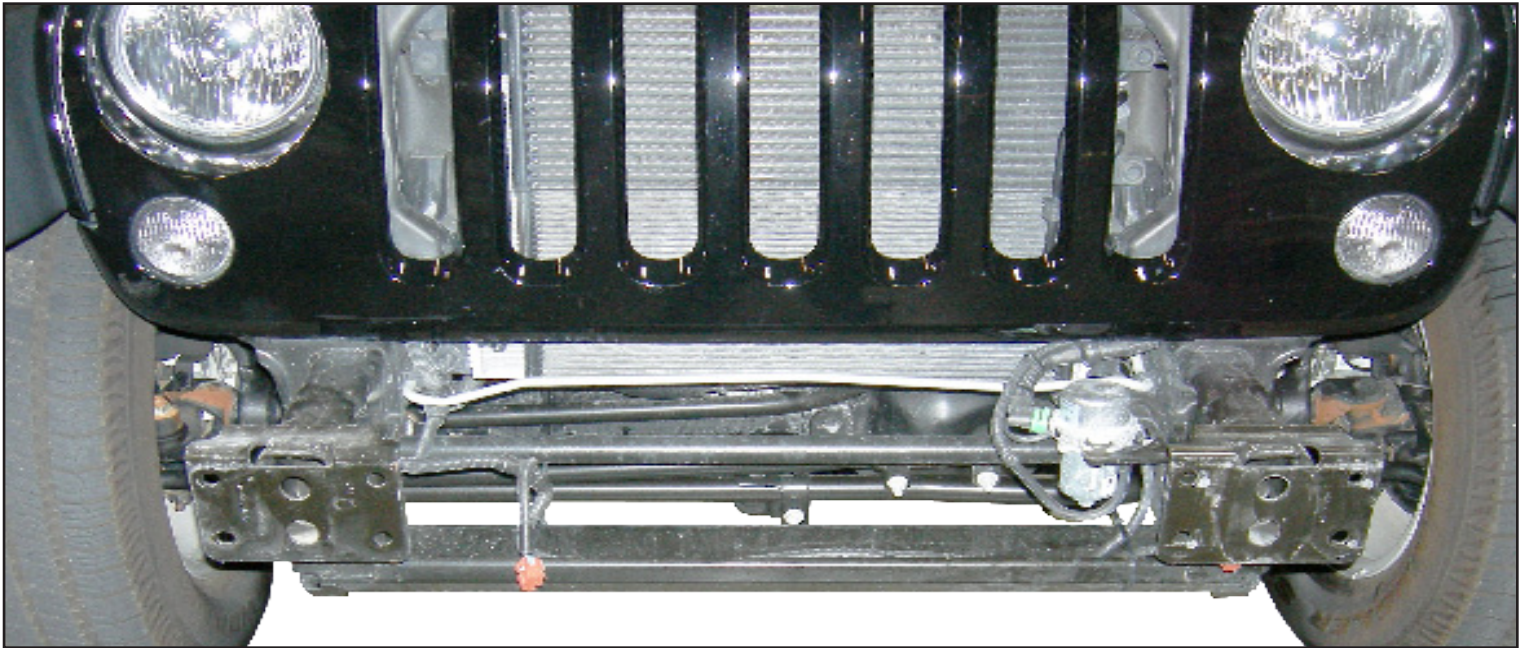


Diagram 1

Driver Side Fog Light Installed

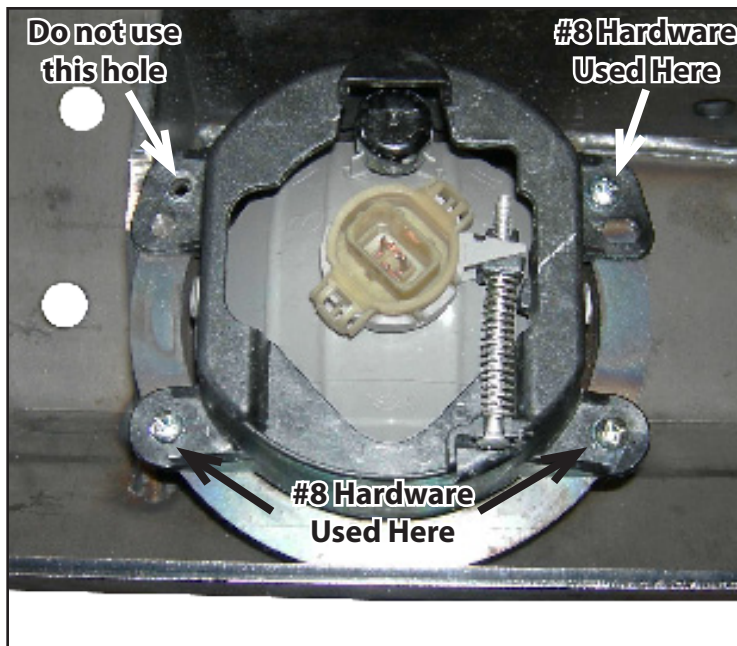


Diagram 2

Passenger Side Fog Light Installed

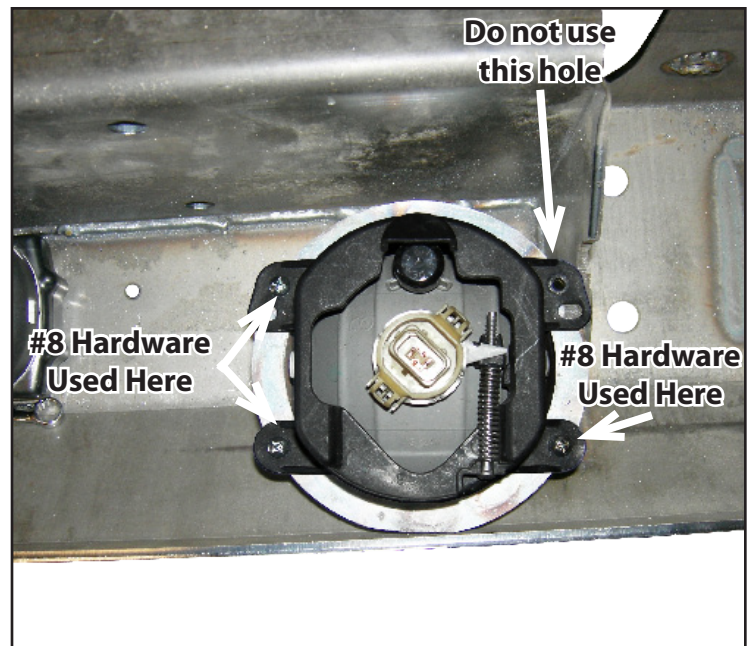


Diagram 3

Bumper Replacement

Installation Instructions

94100

Jeep Wrangler

'07 - '17

Bumper and Bull Bar Installed With a Winch



Diagram 4

5/16" Button Head Bolts Installed on Passenger Side of Bumper

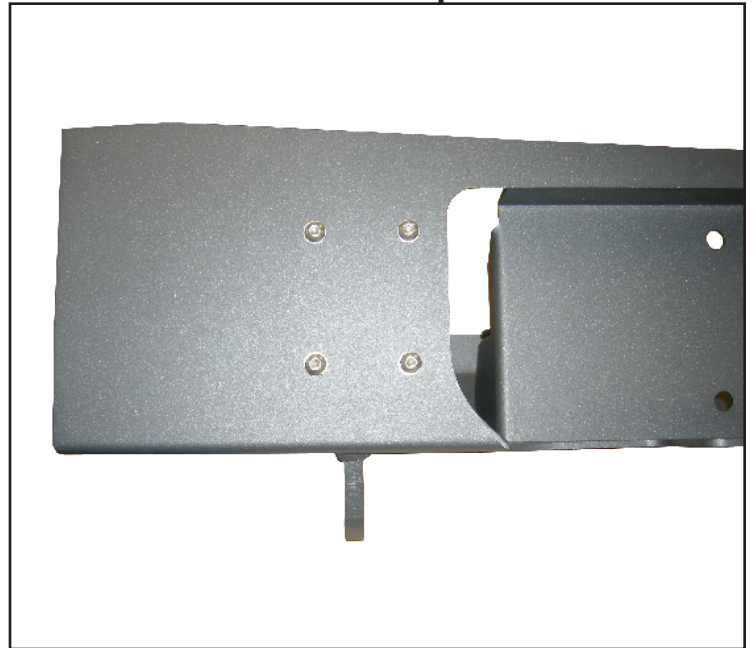


Diagram 5