

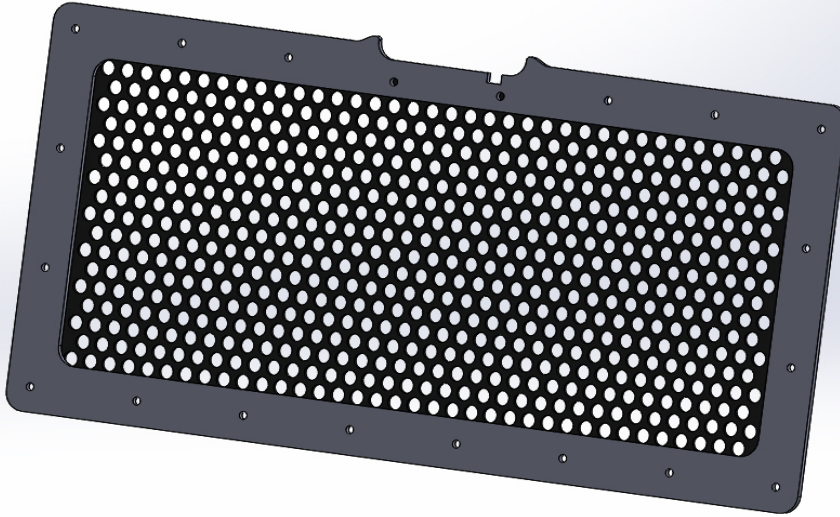


420 N. Grove, Richardson, TX 75081
Tele: (800) 527 - 4345 Fax: (800) 442 - 5263
Web site: www.goindustries.com
E-mail: gosupport@goindustries.com

Jeep Grille Insert Installation Instructions

94700

Jeep Wrangler JK / Wrangler JK Unlimited
2007 - 2018



94700 Components

- 1) Jeep Grille Insert
- 20) 1/4" - 20 x 3/4" Button Head Screws
- 20) 1/4" Flat Washers
- 20) 1/4" Nylon Locking Nuts

*May include extra hardware.

Note: Completely read instructions before beginning installation!

1. Remove contents from the box and check for missing pieces or damage. If parts are missing or damaged, please contact original place where item(s) were purchased.
2. Remove the factory grille shell from the vehicle, set it on a flat surface and tape the front to prevent any accidental damage.
3. Place the grille insert on to the grille shell, center and align the insert, and then mark the mounting holes to be drilled.
4. Remove the insert and carefully drill out the holes using a 1/4" drill bit.
5. Using 2 - 4 sets of 1/4" hardware, temporarily install the insert on to the grille shell and mark the grille slats for cutting. Marks should be made so that when cut you cannot see the unremoved portion through the grille insert.
6. Remove the grille insert and cut the slats out with a saw or hot knife, being sure to follow your cut marks.
7. Remove the tape from the grille shell and install the insert utilizing the (20) 1/4" x 3/4" bolts through the front of the insert and the grille shell, followed by (20) 1/4" flat washers and (20) 1/4" nylon locking nuts on the back side.
8. Re-install the completed grille shell on your vehicle.

Note: Re-check all hardware for proper tightness upon completion and periodically inspect hardware and parts for signs of wear throughout the life of the product.