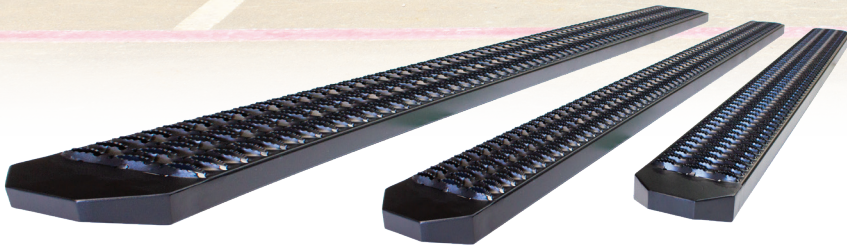




Scan to visit
Go Industries website



Grooved Steps
for Ford, Chevy, Dodge



33607 Carrier



Part #79636
Size: 36x18x18 inches



Black Painted Tailgate - V-Style
Available in White or Black Powder Coat Finish

ET004 & ET005 Chevy 2016-26



Fleet Requested Part



Part #ET004



Part #ET005

Welded Grille Guard		
Year	Make & Model	Part #
	Chevrolet	
19 - 26	C4500-C6500 with Carrier *	ET004
19 - 26	C4500-C6500 without Carrier *	ET005
19 - 26	C4500-C6500 Steel Bumper w/GG and Carrier	ET016

*Also International C-Series

- Designed with the tilt body in mind
- Our locking mechanism has two OEM style latches
- Come standard with winch tray that will hold up to a 16.5k available for part #ET004
- Fully welded together with headlight Brush Guards constructed out of 1.9", 14 gauge tubing and 2.5" center cross tubes
- The center screen is laser cut out of 18 gauge material.
- Black textured powder coat finish.
- Proudly made in the U.S.A.

48
YEARS
MANUFACTURING
EXPERIENCE

Index

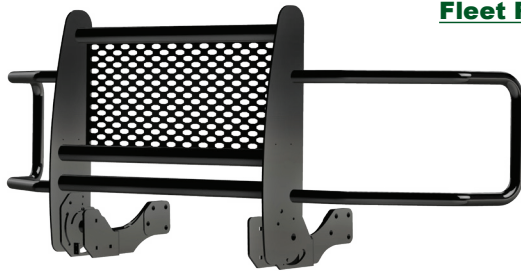
Medium Duty Grille Guards	2-3
Bumper Replacements	4
Winch Systems	5 - 6
Pro Series Bumpers	7
Rancher and Big Tex Grille Guards	8
Steps and Tool Box	9
Rack Systems, Tailgates and Flat Bed	10 - 11
Mud Flaps and Accessories	12
Law Enforcement	13
Custom Manufacturing	14
Policy Statement	15



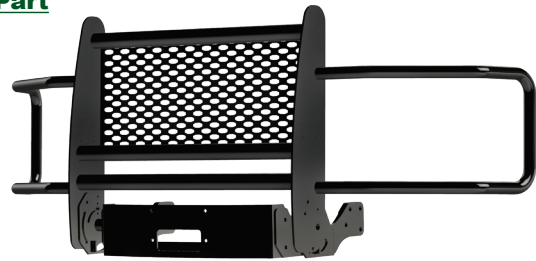
ET007 & ET008 Ford 2016-26 Medium Duty Grille Guards



Fleet Requested Part



Part #ET007



Part #ET008

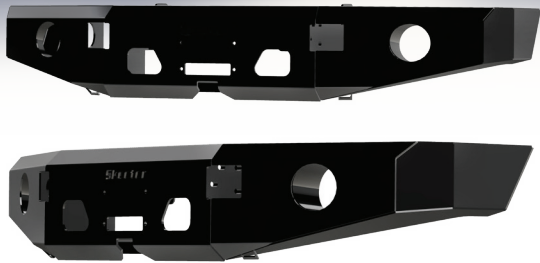


- Designed with the tilt body in mind
- Our locking mechanism has two OEM style latches
- Come standard with winch tray that will hold up to a 16.5k available for part #ET007
- Fully welded together with headlight Brush Guards constructed out of 1.9", 14 gauge tubing and 2.5" center cross tubes

- The center screen is laser cut out of 18 gauge material.
- Black textured powder coat finish.
- Proudly made in the U.S.A.

Welded Grille Guard		
Year	Make & Model	Part #
	Ford	
16 - 26	F650/F750 without Carrier	ET007
16 - 26	F650/F750 with Carrier	ET008

ET009 & ET0010 Ford 2016-26 Bumper Replacements



Part #ET009



Part #ET010

- Designed with the tilt body in mind
- Our locking mechanism has two OEM style latches
- Come standard with winch tray that will hold up to a 16.5k available for part #ET009
- Fully welded together with headlight Brush Guards constructed out of 1.9", 14 gauge tubing and 2.5" center cross tubes
- The center screen is laser cut out of 18 gauge material.
- Black textured powder coat finish.
- Proudly made in the U.S.A.



Bumper Replacement		
Year	Make & Model	Part #
	Ford	
16 - 26	Bumper Replacement F650/F750	ET009
16 - 26	Bumper Replacement F650/F750 with Brush Guards	ET010



PART #33746B
CHEVY SILVERADO 1500 '16-'18
W/ PART #33600



31757 Carrier



33600 Carrier



33601 Carrier



33603 Carrier

- Modular style Winch System Grille Guard that provides the base for other options or can be used alone for serious front end protection.

- Add the Optional 1.9" 14 gauge Steel Brush Guards to compliment the vehicle's lines and for additional protection to the headlight area from road debris and off-road brush.

- Add the Optional 9500 lb or 16500 lb Winch Carrier to complete this 3 piece modular guard
- Grille Guards and Brush Guards are available in Matte Black Powder Coat or Chrome Finish.

- 5/16th" laser cut steel uprights
- 2.5" 16 gauge steel cross tubes
- Frame-mounted with heavy-duty custom mounting brackets for maximum strength

Winch Grille Guard Application Guide

Year

Make & Model

				Winch Carrier		Bolt in Receiver Hitch	
		Black	Black	Up to 9500	Up to 16500		
Ford							
17 - 26	Super Duty F250 - F550 ^{7, 8, 10}	33648B	26648B	33600	33601	33603 *	33607
11 - 16	Super Duty F250 - F550 ^{7, 10}	33644B	26644A	33600	33601	33603 *	33607
24 - 26	F150	33659B	26659B	33600	33601	33603 *	33607
21 - 23	F150	33657B	26657	33600	33601	33603 *	33607
18 - 20	F150 ^{7, 8, 9, 10, 11}	33656B	26650B	33600	33601	33603 *	33607
15 - 17	F150 ^{7, 8, 9, 10}	33650B	26650B	33600	33601	33603 *	33607
18 - 21	Ford Expedition ^{7, 8, 10}	33617B	26617B	33600	33601	33603 *	33607
10 - 13	Ford Expedition ^{4, 6, 7}	33619B		33600	33601	33603 *	33607
Chevrolet							
20 - 25	Silverado 2500HD/3500 ^{7, 10}	33757B	26757B	33600	33601	33603 *	33607
15 - 19	Silverado 2500HD/3500 ⁷	33752B	26736B	33600	33601	33603 *	33607
11 - 14	Silverado 2500HD/3500 ⁷	33751B	26751B	33600	33601	33603 *	33607
19 - 25	Silverado 1500 ^{4, 7, 10}	33703B	26703B	33600	33601	33603 *	33607
16 - 18	Silverado 1500 ^{4, 7}	33746B	26736B	33600	33601	33603 *	33607
14 - 15	Silverado 1500 ^{4, 7}	33736B	26736B	33600	33601	33603 *	33607
07 - 13	Silverado 1500 ^{4, 7}	33735B	26735B	33600	33601	33603 *	33607
GMC							
15 - 19	Sierra 2500HD/3500 ^{1, 7}	33754B		33600	33601	33603 *	33607
11 - 14	Sierra 2500HD/3500 ^{1, 7}	33751B	26751B	33600	33601	33603 *	33607
14 - 18	Sierra 1500 ^{1, 4, 7}	33749B		33600	33601	33603 *	33607
Dodge							
20 - 25	Ram 2500-5500 (New Body)	33673B	26673B	33600	33601	33603 *	33607
10 - 19	Ram 2500/3500 Classic ^{3, 7, 10}	33669B	26669B	33600	33601	33603 *	33607
07 - 19	Ram 3500-5500 (Classic) Chassis Cabs ⁷	33665B	26665B	33600	33601	33603 *	33607
19 - 25	Ram 1500 (New Body) ^{3, 7, 10}	33675B	26675B	33600	33601	33603 *	33607
13 - 25	Ram 1500 Classic ^{3, 7, 10}	33671B	26669B	33600	33601	33603 *	33607

* Special Order Only



33607 Carrier



Product Key

1. Will not fit Denali Models or Denali Style Grilles.
2. Will not fit Harley Davidson Models.
3. Will not fit Ram Sport or Plastic Bum Bumpers
4. Trimming may be required
5. Will not fit Lariat Limited
6. Will not fit F-150 EcoBoost
7. Interferes with front bumper sensors
8. May interfere with Adaptive Power Steer
9. Will not work with 5.0 V8 Engines
10. Will interfere with OEM front facing cameras
11. Will fit the Ford F150 Diesel Powerstroke Models 2018-19

Three-Year Warranty on Workmanship and Finish

FLEET REQUESTED PARTS

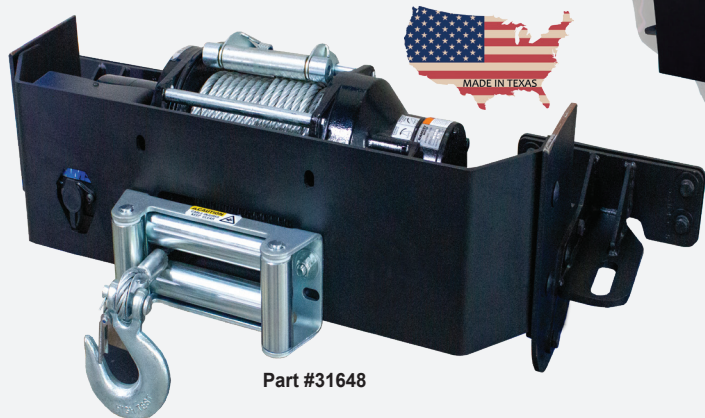
Winch Mounts & Pro Series Bumpers

Winch Mounting Plate Systems

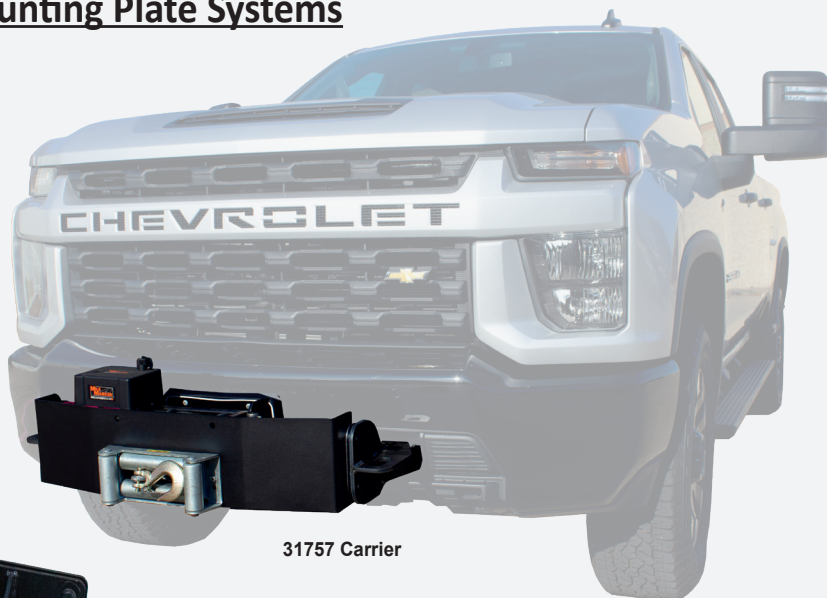
Installing a winch mounting plate on the front bumper of your vehicle allows you to add the ability to recover vehicles with a winch.

These plates are designed to match the mounting pattern and specifications of specific winches or winch brands.

They come in various sizes and configurations to accommodate different models and capacities of winches.



Part #31648



31757 Carrier

Year	Make & Model	
20 - 26	Chevy Silverado 2500HD/3500	31757
17 - 26	Ford Super Duty F250 - 550	31648
19 - 26	Dodge Ram 2500-5500 (New Body)	31673



ET012

Fully Welded Winch System

- Designed with the fully welded Winch Grille Guard and carrier
- Come standard with winch tray that will hold up to a 16.5k
- Black textured powder coat finish.
- Proudly made in the U.S.A.

Year	Make & Model	
24 - 26	Ford F150	ET015
19 - 25	Chevy Silverado 1500	ET014
17 - 26	Ford Super Duty F250 - 550	ET013
20 - 26	Chevy Silverado 2500HD/3500	ET012
20 - 26	Dodge Ram 2500-5500 (New Body)	ET011



ET013

Pro Series Bumpers

Year	"Pro Series" Application Guide	Part #
	Make & Model	Wrap With Winch Carrier
	Ford	
17 - 25	F-450 - F-550 Super Duty *	58647W *
11 - 16	F-250 - F-550 Super Duty *	58645W
	Dodge	
19 - 25	Ram 2500/5500 (New Body)	58100R
10 - 19	Ram 2500/3500 (Classic)	58673W *

*May Interfere with Front Facing Cameras

Three Year Warranty on Workmanship, Materials, Rock Chip Damage - Excludes Fading



PART #58645W
FORD F250-F550
SD '11 - '16

Optional Powder Coat Finish Available. Optional Receiver Hitch Available. Special Order Only.

FRONT BUMPER PART #60173



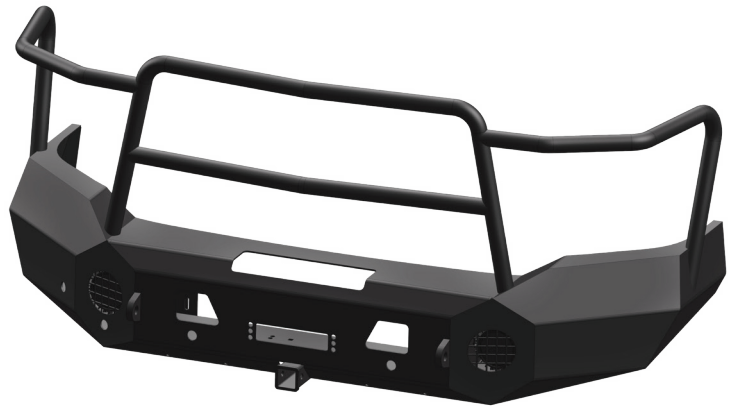
- Sensor Compliant
- Constructed of 1/4" Internal Structure and 11 Ga Steel Exterior
- Bezel Accents Included
- 3/4" "D" Rings
- Choice of Bare Steel or Textured Black Powder Coat Finish
- Four 3" Light Pockets
- 1/4" Mount Brackets to Factory Frame
- Winch Capable

Series "X" Bumber Replacement		
Year	Make & Model	
Dodge		
21 - 26	Ram 2500 - 5500	58100R
20 - 26	Ram 2500 - 5500	60173
Ford		
23 - 26	F250 - 550 Bumper Only	60148
23 - 26	F250 - 550 Bumper and Brush Gurads	69048

**** Ask about our Aluminum Bumpers (Special Orders Only)**

PRO SERIES BUMPER PART #58100R

- One piece fully welded
- Comes with optional winch receiver that hold up to a 16,5k
- Gueads constructed out of 1.9", 14 guag tubing and 2.5" center cross tubes
- Texture Black Powder coat finish
- Made in the USA



Part #58100R

FRONT BUMPER PART #60148

- Sensor Compliant
- Constructed of 1/4" Internal Structure and 11 Ga Steel Exterior
- Choice of Bare Steel or Textured Black Powder Coat Finish
- Four 3" Light Pockets
- 1/4" Mount Brackets to Factory Frame
- Winch Capable



Part #60148

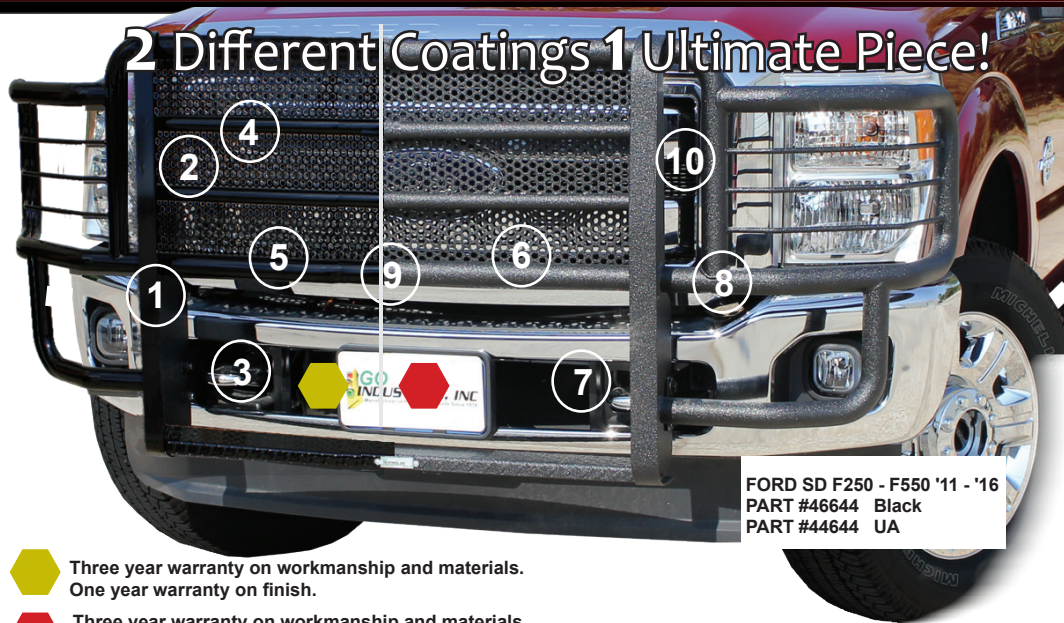
PRO SERIES BUMPER PART #69048

- One piece fully welded
- Comes with optional winch receiver that hold up to a 16,5k
- Gueads constructed out of 1.9", 14 guag tubing and 2.5" center cross tubes
- Texture Black Powder coat finish
- Made in the USA



Part #69048

Rancher™ & BigTex Grille Guards



FORD SD F250 - F550 '11 - '16
PART #46644 Black
PART #44644 UA

Three year warranty on workmanship and materials.
One year warranty on finish.

Three year warranty on workmanship and materials.
Three year warranty on finish on UA Coating.

- 1 Easy, no drill, frame mount installation is designed to utilize existing holes in the frame for extra strength, rigidity and no vibration.
- 2 1/4", laser cut steel uprights. Retains or replaces tow hooks on all applications.
- 3 Center grille is 18 gauge steel with 1/2" punched holes on most models.
- 4 Heavy-duty 1.9", 14 gauge steel tubular frame is designed to accentuate each vehicle's front end.
- 5 A built-in wide Diamond "Step Plate" allows easy access to the hood and engine on today's big trucks and SUV's.
- 6 UA Coating is up to 40 mil. of protection, versus only 3 - 6 mil. on powder coat finishes, making it ideal for areas prone to corrosion.
- 7 UA Coating is resistant to various solvents, caustics, and mild acids.
- 8 UA Coating is abrasion resistant, weather resistant, and flexible
- 9 UA Coating is waterproof, seamless, and resilient

Rancher Grille Guard Application Guide

Year	Make & Model	Part #
Ford		Black UA
17 - 26	F250 - F550 Super Duty ^{14, 15, 17}	46648 44648
11 - 16	F250 - F550 Super Duty ^{14, 17}	46644 44644
99 - 07	F250 - F550 Super Duty ⁴	46641 44641
21 - 26	F150	46657 44657
18 - 20	F150 ^{14, 15, 16, 17, 18}	46656 44656
15 - 17	F150 ^{14, 15, 16, 17}	46650 44650
09 - 14	F150 ^{4, 8, 10, 12, 13, 14}	46639 44639
00 - 06	Excursion	46641 44641
Dodge		Black UA
19 - 26	Ram 2500/5500 Chassis Cab (New Body) ^{14, 17}	46673 44673
11 - 19	Ram 3500/4500/5500 Chassis Cab (Classic) ^{6, 14, 17}	46669 44669
10 - 19	Ram 2500/3500 (Classic) ^{6, 14, 17}	46669 44669
06 - 09	Ram 2500/3500 ⁷	44664*
03 - 05	Ram 2500/3500 ⁶	44661*
19 - 26	Ram 1500 (New Body) ^{8, 14, 15, 17}	46675 44675
13 - 24	Ram 1500 (Classic) ^{8, 14}	46671 44671
GMC		Black UA
15 - 19	Sierra 2500HD/3500 (Also Fits Denali) ^{14, 17}	46754 44754
14 - 18	Sierra 1500 ^{1, 14}	46749 44749*
Chevrolet		Black UA
20 - 26	Silverado 2500HD/3500 ^{14, 17}	46757 44757
15 - 19	Silverado 2500HD/3500 ^{14, 17}	46752 44752
19 - 25	Silverado 1500 ^{8, 14, 15, 17}	46703 44703
16 - 18	Silverado 1500 ^{8, 14, 17}	46746 44746
14 - 15	Silverado 1500 ^{8, 14}	46736 44736
99 - 02	Silverado 1500, 2500	46699
15 - 20	Suburban/Tahoe ^{14, 17}	46737 44737

Product Key

1. Will not fit Denali Models or Denali Style Grilles.
2. Will not fit Z71 models.
3. Will not fit Hybrid Models.
4. Will not fit Harley Davidson Models.
5. Will not fit FX2 Sport, or '04 Heritage
6. Will not fit Ram Sport or Plastic Bumpers
7. Will fit Ram Sport or Plastic Bumpers
8. Trimming may be required
9. Will fit Hybrid Models
10. F-150 EcoBoost models require Part #46639ECO
11. Will not fit Sierra "All Terrain" Edition
12. Will not fit Lariat Limited
13. Will not fit F150 Raptor
14. Interferes with front bumper sensors
15. May interfere with Adaptive Power Steer Control
16. Will not work on 5.0 V8 engines
17. Will interfere with OEM front facing cameras
18. Will fit the Ford F150 Diesel Powerstroke Models 2018-19



FLEET REQUESTED PARTS

Big Tex Grille Guard Application Guide

Year	Make & Model	Part #
Chevrolet		Black
08 - 26	Chevy Express Van 1500/2500/3500 ^{1, 2}	77535B
GMC		Black
08 - 26	GMC Savanna Van 1500/2500/3500 ^{1, 2}	77535B
Ford		Black
08 - 26	All E-Series Vans E150-E550 ^{1, 2}	77531B



PART #77531
FORD E-SERIES VAN '08 - '24



Underbody Boxes (1 Door)



Underbody Boxes (2 Door)



Topside Boxes



Topper Compartments

Underbody Truck Toolbox

Available in various sizes!

Experience reliable underbody storage for your truck with this robust toolbox. Featuring a durable 14-gauge steel body, corrosion-resistant powder coating, and versatile mounting options, it offers the perfect balance of security and style for your gear.

Work Boxes		
Part	Description	Color
Underbody Boxes		
79624	Dimensions 24x18x18 in - Underbody Box	Black
79630	Dimensions 30x18x18 in - Underbody Box	Black
79636	Dimensions 36x18x18 in - Underbody Box	Black
79648	Dimensions 48x18x18 in - Underbody Box	Black
79660	Dimensions 60x18x18 in - Underbody Box	Black
79672	Dimensions 72x18x18 in - Underbody Box	Black
79696	Dimensions 96x18x18 (2 Door) in - Underbody Box	Black
Topper Compartments		
79514	Dimensions 96x14.5x7.5 in - Topper Box	White
79520	Dimensions 96x20x7.5 in - Topper Box	White
79508	Dimensions 108x20x7.5 in - Topper Box	White
79519	Dimensions 72x20x7.5 in - Topper Box	White
Topside Boxes		
79448	Dimensions 48x15x17 in (Single door) - Topside Box	White
79472	Dimensions 72x15x17 in - Topside Box	White
79488	Dimensions 88x15x17 in - Topside Box	White
79496	Dimensions 96x15x17 in - Topside Box	White



Part #79501
Size: 72x19x10 inches



Available in various sizes!

Shovel Box

The shovel box is designed for effortless installation and provides an ideal storage solution for shovels. Its sides are crafted from perforated metal, allowing dirt to fall away and preventing accumulation within the box.

Shovel Box	
White	79501
Black	79502



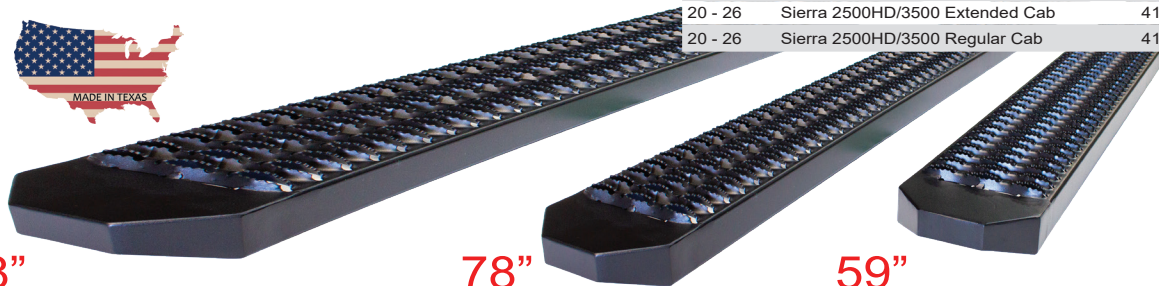
"Sure Steps"

Sure Steps – Durable, Slip-Resistant Truck Side Steps

Upgrade your truck with Sure Steps, designed to provide maximum traction and durability in all weather conditions.

These heavy-duty side steps are crafted to fit a variety of Ford, Dodge, Chevrolet, and GMC models, offering a rugged solution for enhanced vehicle accessibility.

Featuring a slip-resistant, perforated surface, they ensure a secure foothold, making entry and exit safer and easier.



88"

78"

59"

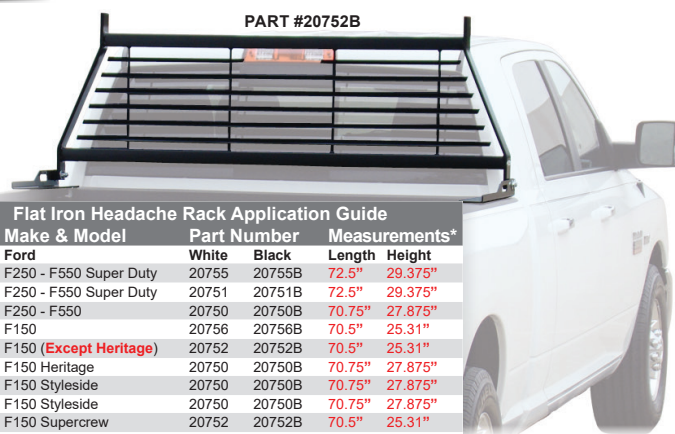
Step Application Guide

Year	Make & Model	Part # / Lengths		
		BRAC	STEP	L
Ford				
17 - 26	F-250 - F-550 Super Duty Crew Cab	41304	42011	88"
17 - 26	F-250 - F-550 Super Duty Extended Cab	41304	42010	78"
17 - 26	F-250 - F-550 Super Duty Regular Cab	41347	42009	59"
Dodge				
19 - 26	Ram 2500 - 5500 (New Body) Crew Cab	41301	42011	88"
19 - 26	Ram 2500 - 5500 (New Body) Extended Cab	41301	42010	78"
19 - 26	Ram 2500 - 5500 (New Body) Regular Cab	41322	42009	59"
Chevrolet				
20 - 26	Silverado 2500HD/3500 Crew Cab	41355	42011	88"
20 - 26	Silverado 2500HD/3500 Extended Cab	41355	42010	78"
20 - 26	Silverado 2500HD/3500 Regular Cab	41356	42009	59"
GMC				
20 - 26	Sierra 2500HD/3500 Crew Cab	41355	42011	88"
20 - 26	Sierra 2500HD/3500 Extended Cab	41355	42010	78"
20 - 26	Sierra 2500HD/3500 Regular Cab	41356	42009	59"

Flat Iron Headache Racks

- Commercial grade headache rack made for heavy-duty use.
- Vertical uprights made from 1/2" x 3" flat steel. Cross tubes are 2" square, 14 gauge steel. Feet are 3/16" x 3" x 24" steel.
- Three applications fit all full size trucks.
- Protects the back window from shifting cargo.
- Go Industries Exclusive - Built in tie down point on feet
- Available in black or white powder coat finish.
- Three-year warranty on material and workmanship; six-month warranty on finish.

Our headache racks will not work with ANY factory cameras



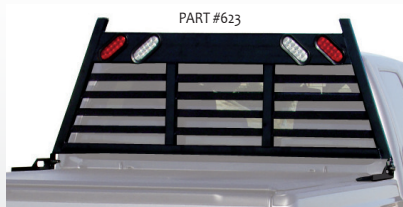
Year	Make & Model	White	Black	Length	Height*
Ford					
17 - 26	F250 - F550 Super Duty	20755	20755B	72.5"	29.375"
99 - 16	F250 - F550 Super Duty	20751	20751B	72.5"	29.375"
78 - 98	F250 - F550	20750	20750B	70.75"	27.875"
15 - 26	F150	20756	20756B	70.5"	25.31"
04 - 14	F150 (Except Heritage)	20752	20752B	70.5"	25.31"
2004	F150 Heritage	20750	20750B	70.75"	27.875"
97 - 03	F150 Styleside	20750	20750B	70.75"	27.875"
78 - 96	F150 Styleside	20750	20750B	70.75"	27.875"
04 - 08	F150 Supercrew	20752	20752B	70.5"	25.31"
01 - 03	F150 - F250 LT Supercrew	20750	20750B	70.75"	27.875"
Chevrolet/GMC					
19 - 26	1500	20703	20703B	70"	24"
07 - 26	2500HD/3500	20752	20752B	70.5"	25.31"
92 - 07	2500, 2500HD, 3500	20750	20750B	70.75"	27.875"
14 - 18	1500	20752	20752B	70.5"	25.31"
07 - 13	1500	20750	20750B	70.75"	27.875"
88 - 07	1500 Fleetside	20750	20750B	70.75"	27.875"
Dodge					
19 - 24	Ram 2500/3500 (New Body)	CALL	CALL		
19 - 24	Ram 1500 (New Body)	20703	20703B	70"	24"
10 - 24	Ram 2500/3500 (Classic)	20752 *	20752B *	70.5"	25.31"
94 - 09	Ram 2500/3500	20750 *	20750B *	70.75"	27.875"
94 - 24	Ram 1500 (Classic)	20750 *	20750B *	70.75"	27.875"
Toyota					
07 - 21	Tundra	20750	20750B	70.75"	27.875"

All Racks Must Ship Freight

* Will not fit trucks with Ram Box Beds

*Measurements are based on headache racks height and width only. When adding the 24" foot, add approximately 1 1/2" to the height.

Heavy Duty Rack System

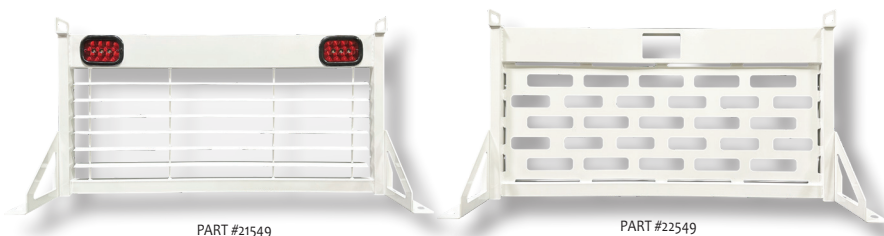


All Racks Must Ship Freight



- Constructed for extra heavy-duty use!
- Two applications fit all full-size pickups.
- Available in white or black powder coat finish.
- 6" x 2" Steel Top Tube with 2" x 2" bottom and vertical tubes.
- Massive 24" x 3" heavy-duty foot for extra strength and to mount a tool box right on top.
- Big 3/16" Louvers to protect your cab window.
- LED Red and Clear lights with optional 3rd Brake
- Three-year warranty on materials and workmanship; six-month warranty on finish.

Year	Make & Model	Part Numbers	
		Heavy-Duty Lighted Rack	
		White	Black
Ford			
17 - 26	F250 - F550 Super Duty	625	625B
78 - 16	F250 - F550 Super Duty	620	620B
15 - 26	F150	626	626B
04 - 14	F150 (Except Heritage)	623	623B
2004	F150 Heritage	620	620B
78 - 03	F150 Styleside	620	620B
04 - 08	F150 Supercrew	623	623B
01 - 03	F150/F250 LT Supercrew	620	620B
Chevrolet/GMC			
07 - 26	2500HD/3500	623	623B
92 - 07	2500, 2500HD & 3500	623	623B
19 - 24	1500	603	603B
07 - 18	1500	623	623B
88 - 07	1500 Fleetside	623	623B
Dodge			
19 - 26	Ram 2500/3500 (New Body)	CALL	CALL
10 - 19	Ram 2500/3500 (Classic)	623	623B
94 - 09	Ram 2500/3500	620	620B
19 - 25	Ram 1500 (New Body)	675	675B
13 - 23	Ram 1500 (Classic)	623	623B
94 - 12	Ram 1500	620	620B
Toyota			
14 - 21	Tundra	623	623B
07 - 13	Tundra	620	620B



Service Body Headache Rack

The **Body Headache Rack** provides rear window protection from accidental breakage while safeguarding your truck's.

Designed for Chevy, Ford, GMC, and Ram trucks, it features 10 inches of vertical adjustment on both sides in 2½-inch increments for a precise fit.

Equipped with additional forward mounting holes, it allows for optimal positioning over the bulkhead. Finished in a durable black powder coat.

All	White	Black
49" Lighted Service Body HR with Louvers	21549	21549B
49" Non Lighted Service HR with Screen	22549	22549B
54" Lighted Service Body HR with Louvers	21554	21554B
54" Non Lighted Service HR with Screen	22554	22554B



Air Flow Tailgates



Black Painted Tailgate - V-Style
Available in White or Black Powder Coat Finish

Airflow Tailgate Application Guide Make & Model						
Year	Ford	Black Louvered V-Gate	White Painted V-Gate	Black Painted V-Gate	White Painted Straight	Black Painted Straight
17 - 26	F250/F550 Super Duty*		6697	6697B	6647	6647B
99 - 16	F250/F550 Super Duty*	6142	6648	6648B	6618	6618B
04 - 14	F150 (except Heritage)		6686	6686B	6636	6636B
2004	F150 Heritage	6167	6648	6648B	6618	6618B
97 - 03	F150 (except SuperCrew)	6167	6648	6648B	6618	6618B
Chevrolet/GMC						
07 - 19	Silv/Sierra 2500HD/3500	6135	6684	6684B	6634	6634B
01 - 07	Silv/Sierra 2500HD/3500	6166	6682	6682B	6632	6632B
92 - 00	CK Pickups 2500/3500					
07 - 18	Silverado/Sierra1500	6135	6684	6684B	6634	6634B
99 - 07	Silverado/Sierra 1500	6166	6682	6682B	6632	6632B
Dodge						
10 - 19	Ram 2500/3500 (Classic)	6124			6624	6624B
03 - 09	Ram 2500/3500	6164	6673	6673B	6623	6623B
94 - 02	Ram 2500/3500		6169			
19 - 23	Ram 1500 (New Body)	6175	6675	6675B	6675	6675B
09 - 19	Ram 1500 (Classic)	6124	6674	6674B	6624	6624B
02 - 08	Ram 1500	6164	6673	6673B	6623	6623B
94 - 01	Ram 1500		6169			

Our tailgates will NOT work with lift assist gates or ANY factory cameras.

Black Painted Tailgate - Straight
Available in White or Black Powder Coat Finish



- Constructed from 16 gauge steel and designed to install in minutes.
- Affordable, low cost gates with the benefit of air flow design.

Black Painted Tailgate - V-Style
Available in White or Black Powder Coat Finish



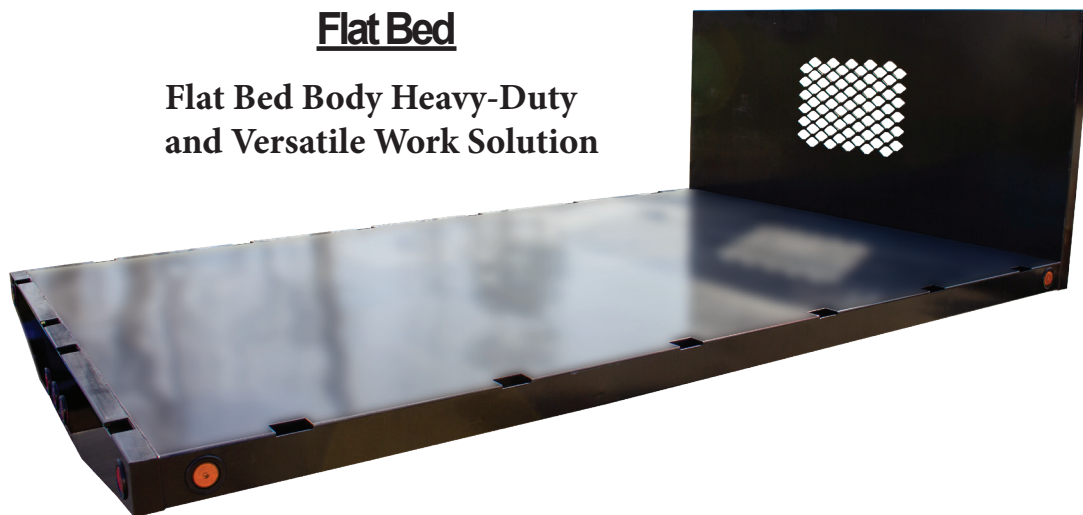
- Available in both V-Style and Straight Style.
- Available in white or black powder coat finish.
- Three-year warranty on materials and workmanship, excluding finish. The powder coat finish is covered by a six-month warranty.
- Made in the USA.

Flat Bed	
Dimensions	Part #
9' Flat Bed - Only	10009
12' Flat Bed - Only	10012
42" Bolt on Headboard	10042
48" Bolt on Headboard	10048



Flat Bed

**Flat Bed Body Heavy-Duty
and Versatile Work Solution**



Maximize your truck's hauling potential with our Flat Bed Body, engineered for durability, functionality, and versatility. Built to handle the toughest jobs, this heavy-duty flatbed provides a sturdy and reliable platform for transporting equipment, materials, and tools with ease.

Mud Flaps & Accessories

Dually Mud Flap Application Guide

Year	Make & Model	Wheel	Part #				
			Classic Dually Set	Stainless Steel Dually Set	Diamond Tread Dually Set	Dually Flaps & Brackets Only	Dually Mounting Brackets Only
17 - 26	Ford Super Duty	Dually	70733SET	S70733SET	D70733SET	70733	70733B
11 - 16	Super Duty	Dually	70731SET	S70731SET	D70731SET	70731	70731B
99 - 10	Super Duty	Dually	70730SET	S70730SET	D70730SET	70730	70730B
73 - 98	Super Duty	Dually	726SET	S726SET	D726SET	726	726B
	Chevrolet/GMC						
20 - 23	2500HD/3500	Dually	70737SET	S70737SET	D70736SET	70737	70737B
11 - 19	2500HD/3500	Dually		S70736SET *	D70736SET *	70736 *	70736B *
07 - 10	2500HD/3500	Dually	70735SET	S70735SET	D70735SET	70735	70735B
01 - 07	2500HD/3500	Dually	70732SET	S70732SET	D70732SET	70732	70732B
92 - 00	2500/3500	Dually	727SET	S727SET	D727SET	727	727B
73 - 91	2500/3500	Dually	725SET	S725SET	D725SET	725	725B
	Dodge						
01 - 02	Ram	Dually	70738SET	S70738SET	D70738SET	70738	70738B
94 - 00	Ram	Dually	729SET	S729SET	D729SET	729	729B

Accessories for Dually Flaps

718	Dually	19" x 14"	Stainless Stiffeners
719	Dually	19" x 3 1/2"	Stainless Weights
721C	Dually		Anti Sail Brackets
D718	Dually	19" x 12"	Diamond Tread Stiffeners
D719	Dually	19" x 3 1/2"	Diamond Tread Weights

* Only comes with Bottom 19 x 3.5" Stainless or Diamond Plate. Not offered with Anti-Sails or Stiffeners due to lack of space to install on vehicle.

* If ordering flaps only (no hardware or accessories) use part number 725F

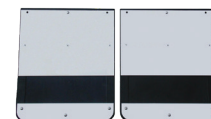
Dually Mud Flaps



Mud Flap and Bracket Dually Set
Includes one pair each of 19" x 24" mud flaps and custom heavy duty mounting brackets.



Bright Diamond Tread Dually Set
Includes one pair each of 19" x 24" mud flaps, custom heavy duty mounting brackets, 19" x 3 1/2" bright diamond tread weights and 19" x 12" bright diamond tread stiffeners.



Stainless Steel Dually Set
Includes one pair each of 19" x 24" mud flaps, custom heavy duty mounting brackets, 19" x 3 1/2" stainless weights and 19" x 14" stainless stiffeners.



Classic Dually Set
Includes one pair each of 19" x 24" mud flaps, custom heavy duty mounting brackets, 19" x 3 1/2" stainless weights and chrome anti-sail brackets.

Dodge Dually Mud Flap & Accessories Application Guide

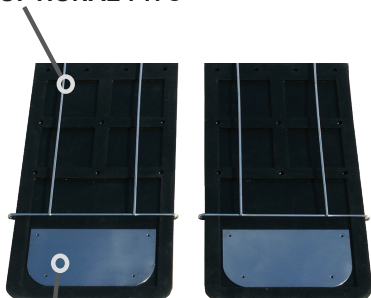
Year	Make	Wheel	Part #	Description
Dodge				
03 - 26	Ram *	Dually	S70764SET	Stainless Dually Set - Includes one pair each of 19" x 24" mud flaps, 18" x 7 1/2" stainless steel weights/stiffeners and OEM style mounting hardware.
03 - 26	Ram *	Dually	D70764SET	Diamond Tread Dually Set - Includes one pair each of 19" x 24" mud flaps, 18" x 7 1/2" diamond tread weights/stiffeners and OEM style mounting hardware.
03 - 26	Ram *	Dually	70764	Mud Flap and Mounting Hardware Set - Includes one pair each of 19" x 24" mud flaps and OEM style mounting hardware.
03 - 26	Ram	Dually	70764KIT	Mounting Hardware Kit - OEM style
03 - 26	Ram	Dually	70717	Stainless Weight/Stiffener 7 1/2" x 18"
03 - 26	Ram	Dually	D70717	Diamond Weight/Stiffener 7 1/2" x 18"



DODGE RAM DUALY '03 - '23
PART #S70764SET

* Will not fit MegaCab Models

OPTIONAL 717C



SINGLE WHEEL MUD FLAP SET

OPTIONAL 714 Weight

Single Wheel Mud Flap Application Guide

Year	Make & Model	Part #	Description
Ford			
99 - 10	Super Duty	70724SET	Includes one pair each of 12" x 24" mud flaps, custom brackets, 9 1/2" x 5" stainless weights and chrome anti-sails
99 - 10	Super Duty	D70724SET	Includes one pair each of 12" x 24" mud flaps, custom brackets, 9 1/2" x 5" weights and 11 3/4" x 7 1/2" diamond stiffeners
99 - 10	Super Duty	70724	Includes one pair each of 12" x 24" mud flaps and custom brackets
99 - 10	Super Duty	723	Single Wheel Mud Flaps with Brackets

Accessories for Single Flaps

723	Single	12" x 24"	Single Wheel Mud Flaps
717C	Single		Chrome Anti-Sail Brackets
D717	Single	11 3/4" X 7.5"	Diamond Tread Stiffeners
714	Single	9.5" x 5"	Stainless Steel Weights
D714	Single	9.5" x 5"	Diamond Tread Weights



Go Industries is very proud to manufacture products for our law enforcement agencies. With over 40 years of experience in metal fabrication, we bring unmatched quality and Superior workmanship to a category that deserves only the best.



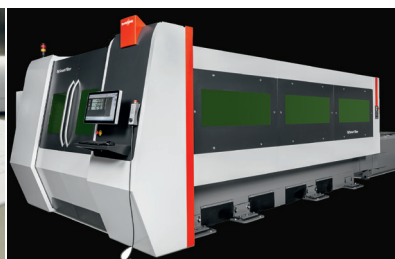
Year	Make & Model	Application	Part #
CHEVY TAHOE			
21 - 26	Tahoe	PUSH BUMPER - CENTER SECTION ONLY	38738
21 - 26	Tahoe	WRAP GRILLE GUARD	39738
21 - 26	Tahoe	WRAP GRILLE GUARD UA FINISH	39938
15 - 20	Tahoe	PUSH BUMPER - CENTER SECTION ONLY (Minor trimming may be required)	38737
15 - 20	Tahoe	WRAP GRILLE GUARD (Minor trimming may be required)	39737
15 - 20	Tahoe	WRAP GRILLE GUARD UA FINISH (Minor trimming may be required)	39937
15 - 20	Tahoe	PUSH BUMPER - RECTANGULAR WELDED WINGS (Minor trimming may be required)	40737
CHEVY 1500 TRUCK			
19 - 23	1500	CENTER SECTION ONLY	38703
19 - 23	1500	WRAP GRILLE GUARD	39703
FORD F 150 TRUCK			
18 - 20	F-150	CENTER SECTION ONLY	38056
15 - 17	F-150	CENTER SECTION ONLY	38050
FORD INTERCEPTOR SUV			
20 - 23	Interceptor	PUSH BUMPER - CENTER SECTION ONLY	38023
20 - 23	Interceptor	PUSH BUMPER - WRAP STYLE	39023
20 - 23	Interceptor	PUSH BUMPER - RECTANGULAR WINGS	40023
16 - 19	Interceptor	PUSH BUMPER - CENTER SECTION ONLY (Minor trimming will be required)	38022
16 - 19	Interceptor	PUSH BUMPER - RECTANGULAR WINGS (Minor trimming will be required)	40021
16 - 19	Interceptor	PUSH BUMPER - CENTER SECTION ONLY (Minor trimming will be required)	38022
16 - 19	Interceptor	GRILLE GUARD - WRAP STYLE (Minor trimming will be required)	30022
16 - 19	Interceptor	PUSH BUMPER - RECTANGULAR WINGS (Minor trimming will be required)	40022

With over 40 years of manufacturing experience, Go Industries offers the following services.

All products are engineered and built out of Texas.



Engineering Services



Fiber Laser Cutting



Certified Welding



Powder Coating

Other Services

- | | | | |
|---|---|---|---|
| <ul style="list-style-type: none"> • Design • Assembly • Packaging • Chrome Plating • Pipe Profiling | <ul style="list-style-type: none"> • Certified Welding D1.1, B31.1, B31.3 • CNC Bending • Rolling • End Forming | <ul style="list-style-type: none"> • Sawing • Bending • Shearing • Notching • Punching | <ul style="list-style-type: none"> • Fabrication • Robotic Welding • Laser Cutting • Plasma Cutting |
|---|---|---|---|

Go Industries Manufacturing Equipment List

TYPE:	NO.	DESCRIPTION:
Fiber Laser	1	Bystronic BySmart 6KW, 120" x 60" Fiber Laser cutting system with automation. Cuts up to 1" mild steel, 1" Stainless Steel, 1" Aluminum, 3/8" Copper
	1	Bystronic 4KW 120" x 60" Fiber Laser cutting system
Press Brake CNC	2	Mitsubishi BB6020 All Electric with Diamond Bend Offline programming
	1	Wysong Fab 100-120, 10' x 120 ton hydraulic CNC Press Brake 4 Axis
	5	Various CNC and non-CNC press brakes, up to 100 ton
Tube Bender	2	Eaton Leonard VB300, with Bend Pro "G2" full 3-axis CNC upgrade - max 3" ; 14' over mandrel
Tube/Angle Roll	2	Eagle Roll Bender model CP-40H/60H - rolls tube, pipe, flat bar, angle iron, T-section and I-beams. CP-40H has 3 roll variable speed
Computerized Pipe Cutter	1	Bendtech A400 Dragon multi-Axis tube and pipe plasma cutting system
Hem Saw	1	Sidewinder, with autofeed. Straight & mitre cut production bandsaw
Cold Saw	1	MEP 12", straight & mitre cut production. Cuts up to 6" diameter tubing
Shear	1	Niagra 10' x 3/16 Hydraulic with Backgauge
Ironworkers	2	Uni-Hydro 42 ton; Iron Crafter 35 ton
Robotic Welder	1	Kawasaki BA006, with OTC Wellbe 400 welder
Mig Welding	30	30 cells various makes and models
Tig Welding	3	3 cells Lincoln 255/300TIG
Plate Rolls	1	Americor L.H. 180/6 guage 6' x 1/4" plate roll
Pem Machine	1	Pneumatic press; 18" throat depth, 6 tons of force
ABW ERP Software		MS SOL based ERP software includes sales/inventory/manufacturing/costing/purchasing and accounting modules unlimited user license
Solidworks		Version 2022, 4 seats

Go Industries offers custom manufacturing solutions along with Private Label programs for select OEM and other businesses.

With our in-house design team, we have the capability to create full, turn-key parts for all of your needs. Parts are built, packaged and assembled in one of our two manufacturing facilities out of Texas. If items need to be coated, we have a high capacity powder coating line and batch oven.

Our large inventory of tooling and machinery saves you the additional overhead expense which comes with fabricating.

Please contact us for further details and RFQ's.

Facilities:

63,000 sq.ft. Warehouse - Richardson, Texas (420 N. Grove Rd.)

31,200 sq.ft. Fabrication facility - Clifton, Texas (201 E. 5th Ave.)



2026 POLICY STATEMENT

All Go Industries CHROME products have a high-quality finish that must be cared for like any other exposed finish on the vehicle. Proper cleaning is essential, especially during winter use. Salts, chemicals, mud, mineral deposits and other semi-permanent debris can lead to corrosion and permanent damage. We recommend a thorough cleaning of all surfaces once a week and/or after hard use. Dry the surfaces to remove any mineral deposits left by water. Protect the finish with a non-abrasive automotive wax, pure carnauba, on a regular basis (at least twice every 30 days). The use of any soap, polish or wax that contains an abrasive is detrimental, as these compounds can scratch the finish, opening it to rust and corrosion which will void the warranty. Failure to clean and take care of the unit with the above steps could result in denied warranty claims.

• **THREE-YEAR WARRANTY** – Including materials, workmanship and finish (Excluding Exposed Welds).

Chrome Big Tex Grille Guards™, Black Big Tex Grille Guard™, Black Grille Shield Grille Guard™, Winch System Grille Guard, Chrome or Black Sport Bars, Stainless Headache Rack, Stainless Air Flow Tailgate, Big Willy Bed Rail™, Billet Grille, Tailgate Protectors and Simulators

• **THREE-YEAR WARRANTY** – Including materials and workmanship (Excluding Finish and Exposed Welds).

1. Diamond Tread Steps, Jeep Bumpers, Jeep “Bull Bar”, Jeep “Rock Guards”, Jeep Light Brackets, Quad - Guard™, Rancher Grille Guard™, Pro – Series Bumper Replacement™, Chrome or Black Big Foot Headache Rack™, Louvered Air Flow Tailgate, and Chrome Bed Rails the finish warranty is one-year. Note: The finish on the Rancher Grille Guard™ is free of paint scratches and chips when packaged. Minor paint scratches and chips caused by installation or transportation handling is not a warranty issue and cannot be returned. Go Industries will furnish touch up paint for minor scratches and chips and the touch up will not harm the integrity of the product.

2. Flat Iron Rack, Heavy Duty Lighted Rack, Painted Tailgates and Spare Tire Mounts the finish warranty is six-months.

3. All products that are coated using the “Ultimate Armor” coating is covered for three years on materials and workmanship excluding fading.

• **TWELVE-MONTH WARRANTY** – Including materials, workmanship and finish.

1. All Law Enforcement products

NATURE OF WARRANTY AND TO WHOM IT APPLIES: Warranties extend to the original consumer and warrant the product against defects in manufacturing, workmanship and finish for the period of the warranty, commencing from the date of purchase. The warranty is limited to repair or replacement of the product and does not include electrical components or light bulb replacement, any charges to remove or re-install the product, labor, freight, inconvenience, consequential damage or any other cost or expenses.

EXCLUSIONS FROM WARRANTY: The Warranty of Go Industries does not extend to exposed welds, freight damage, damage to the products caused by intentional misconduct, negligence, abuse, misuse, road hazards such as damage from gravel, rocks or other debris, modifications or alterations to the product, improper installation, uses of the product contrary to the product information sheet which accompanies the product, improper or inadequate maintenance (see finish protection above) and normal wear and tear. The finish on the Rancher Grille Guard is free of paint scratches and chips when packaged. Minor paint scratches and chips caused by installation or transportation handling is not a warranty issue and cannot be returned. Go Industries will furnish touch up paint for minor scratches and chips and the touch up will not harm the integrity of the product.

EXERCISE OF RIGHT OF WARRANTY: The warranty is conditioned upon the return of the product to the original place of purchase or to Go Industries, at the expense of the consumer, together with the original proof of purchase from the end user and not a reprinted copy from the retailer. If you purchased your product online, the product must be returned to the online reseller or to Go Industries at the expense of the consumer. To return to Go Industries, call Customer Service at (800) 527-4345 and a Return Authorization Number will be issued for return and inspection. Product must be properly boxed to prevent damage to the product during shipment. If it is determined that the product returned was defective because of defects in manufacturing or workmanship, Go Industries will repair or replace the product and return the product at no additional expense to the consumer. If the defect was not due to a defect in manufacturing or workmanship, the product will be returned to the customer if consumer pays transportation expenses. If not, the product will be held for a period of thirty (30) days for the consumer to make arrangements to pick-up the product. After that time, it will be disposed of by Go Industries. Credits that are issued will be in the form of a merchandise credit only. All special-order items such as Brackets, Bracket kits, custom powder coated or manufactured parts are non-returnable.

WAREHOUSE DISTRIBUTORS REQUESTING WARRANTY RETURN: To return product for warranty issues, call Customer Service at (800) 527-4345 for a Return Authorization Number. A Return Authorization Number will be issued for return and inspection. Product must be properly boxed to prevent damage to the product during shipment. A return does not guarantee a credit will be issued. Warranty claims cannot be determined until the returned product is inspected. If the product is found to be abused, altered, or used contrary to what the part was intended, the warranty claim will be denied. Freight damage product is not covered under the warranty policy. Dents, scratches, and bends are freight damage issues and should be treated as such! Product returned as defective and are found to be in saleable condition are subject to a restock and re-box fee. All credits issued are merchandise credits only. Return Authorization Numbers are void after 30 days. Returns over \$6000.00 will be credited over 30/60 day period.

CLAIMS FOR FREIGHT SHIPMENT SHORTAGE OR DAMAGE: It is very important to note any possible shortage or damage on the freight bill at the time of delivery before you sign for the shipment. Any problems must be reported to Go Industries within 72 hours of receipt of the shipment. Claims for all freight lines, UPS and FEDEX must be filed within 15 days of shipment. UPS and FEDEX claims must be filed by Go Industries (the shipper). Claims for all freight lines can be filed by Go Industries as a service for our customers if the shortage or damage has been noted on the freight bill. If not, Go Industries cannot file the claim. All claims with concealed or hidden shortage or damage must be filed by the customer. Go Industries will assist with any claim to insure you receive quality service from the freight carriers.

STOCK ADJUSTMENTS: Go Industries' distributors will be allowed a one (1) stock adjustment per calendar year not to exceed 2% of the previous year's net purchases with an offset order of twice the value of the stock adjustment. A 15% handling fee will be assessed to all stock adjustment returns. The product must be in the original box and in good condition. Product packing in poor condition may be subject to an additional re-box fee. Cash refunds are not allowed. A merchandise credit memo will be issued. Deductions for payments before receipt of a credit memo are not allowed. Damaged or discontinued parts cannot be returned for credit on stock adjustments. All stock adjustment returns must be returned freight prepaid. Returns over \$6000.00 will be credited over a 30/60 day period. Merchandise older than three years from date of purchase from the manufacturer, discontinued or parts that have been updated from the original version cannot be returned.

All new product returns, other than authorized stock adjustments, for whatever the reason and not the fault of Go Industries, will be assessed a 25% handling fee. Product must be in the original box and in good condition. All product returns require a Return Good Authorization Number that must be clearly marked on the outside of the box. Items that are received without an RGA # will be refused. Product packaging in poor condition may be subject to an additional re-box fee. Powder Coated product(s) that are returned as new product but need to be re-coated due to scratches, scraps, etc. are subject to a \$40.00 Powder Coating fee. Any UA Coated product that is returned as new but needs to be recoated due to freight damage are subject to a minimum \$60.00 re-coating fee up to \$150.00 depending product.



GO INDUSTRIES, INC. 420 N GROVE RD, RICHARDSON, TX 75081 PHONE: (800) 527-4345 OR (972) 783-7444 FAX: (972) 437-3425
SALES/CUSTOMER SERVICE FAX: (800) 442-5263 WEBSITE: WWW.GOINDUSTRIES.COM EMAIL: SALES@GOINDUSTRIES.COM
COPYRIGHT GO INDUSTRIES, INC, RICHARDSON, TX PART# CAT19

